



CONCRETE SURFACES

Kuance
STUDIO



CONCRETE SURFACES

Kuance
STUDIO

NUANCE STUDIO



SUBTLY CONCRETE

Nuance Studio reintroduces concrete from a basic construction material to a high-quality luxury product. Using technologically advanced and ultra high performance concrete named "Litheoz", Nuance Studio is equipped with a state-of-art production set up to manufactured varied types of products for both indoor and outdoor spaces. Litheoz, backed with modern techniques can be applied to varied genre of projects, and most importantly, its customizable.



LITHEOZ

Standing apart from the conventional concrete, Litheoz is a technologically advanced material, homogeneously blended to achieve a range of colours, along with fine textures. In technological terms, Litheoz is a ultra high performance fibre reinforced concrete (UHPFRC) carefully engineered to redefine the abilities of concrete. Resulting in a perfect blend of technology and allure.

Varied methodologies from traditional to modern techniques of mould making to casting is adopted by our designers at Nuance Studio. The rheology of Litheoz enables it to be cast into a mould by spraying, pouring, or injecting and even sculpted by hand. Perfecting this rapidly growing technology, Nuance has delivered a range of unique products in many verticals that demand products to be customizable & innovative.



CONTENTS

Flat Panels

- 03** Natural Texture
- 11** Travertine Texture
- 19** Distressed Texture

Bendt Series

- 31** Peel_sq
- 33** Peel_rt
- 37** Hump

41 Fuji

49 Fibonacci

57 Doric Series

63 Ribbed Series

Perspectiles

- 71** Fractal
- 77** Carapace
- 81** Slant
- 89** Squama

93 Colour Palette

95 Installation Procedures

97 Handling and Storage instructions

98 Technical Specifications

Hummer
STUDIO

FLAT PANELS



Iced Steel | Natural Texture | Stud Impression

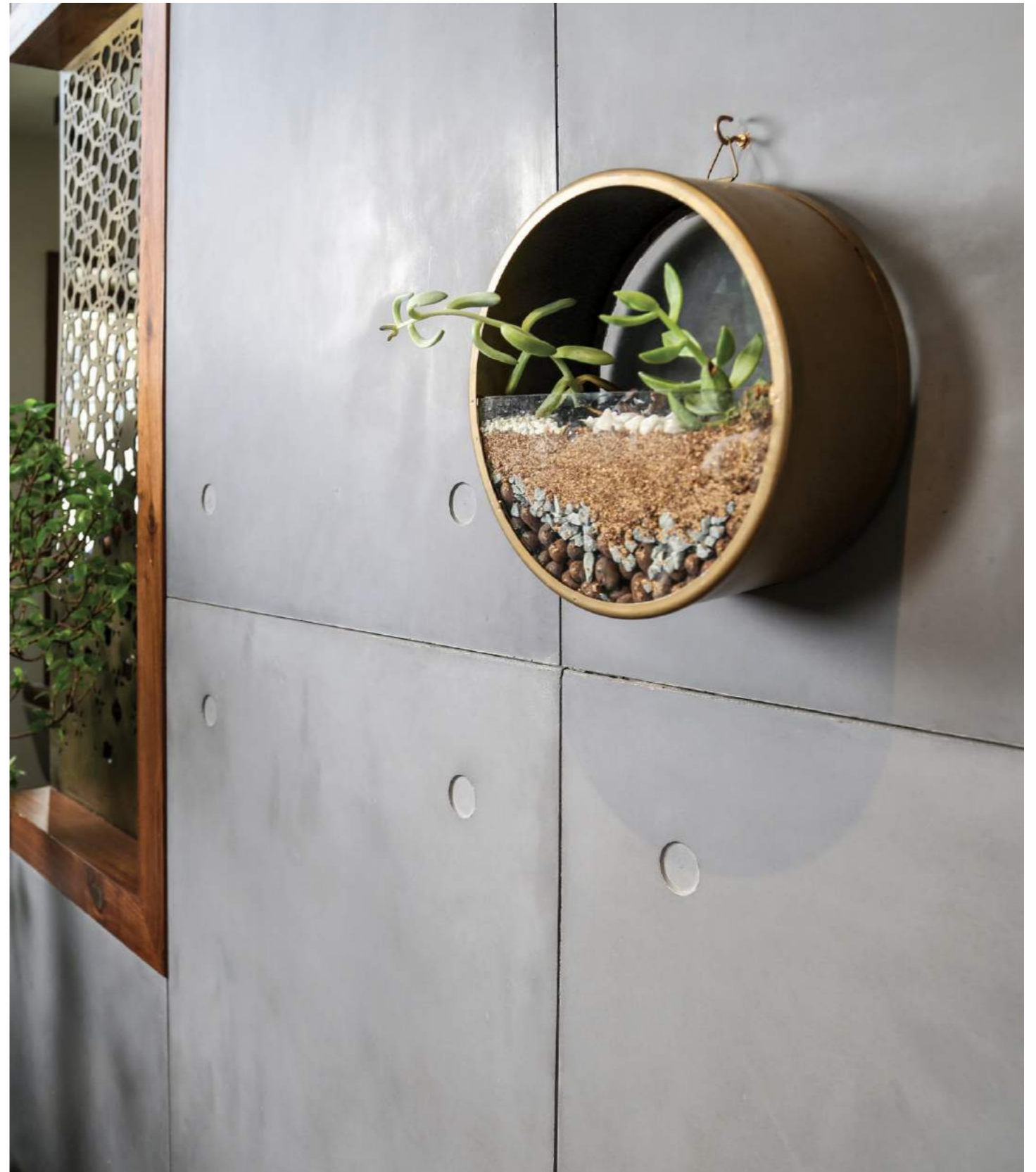
NATURAL

Elegance in simplicity, leaves an everlasting impression. The texture in this wall panel is inspired by exposed concrete that has been used on walls and facades for a long time. Reflecting the true aesthetics of concrete, the mottling tones, shade variations, naturally occurring pinholes enhances the unrefined presence of the Natural Textures offered by Nuance Studio.

NATURAL



Melted Alloy | Natural Texture | Stud Impression





Melted Alloy | Natural Texture | Stud Impression | Residence



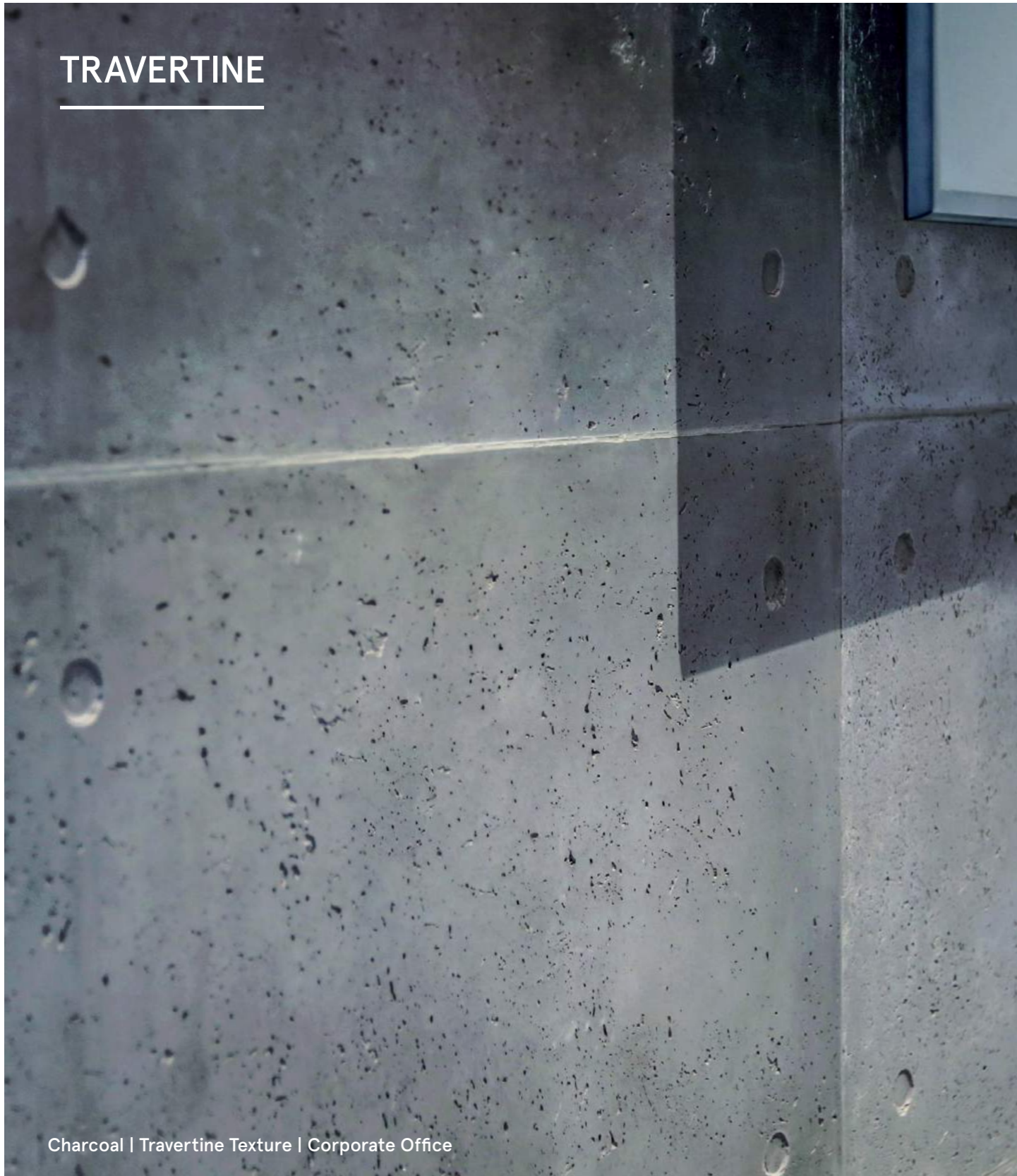
Melted Alloy | Natural Texture | Stud Impression | Residence



TRAVERTINE

Porous texture with deliberate pin and bug holes, Travertine wall panels create a subtle, yet dramatic appeal at indoor and semi indoor spaces. Elements and holes are randomly infused on the texture during the manufacturing process to create an unrefined feel, which effortlessly blends into the contemporary style of design.

TRAVERTINE



Charcoal | Travertine Texture | Corporate Office



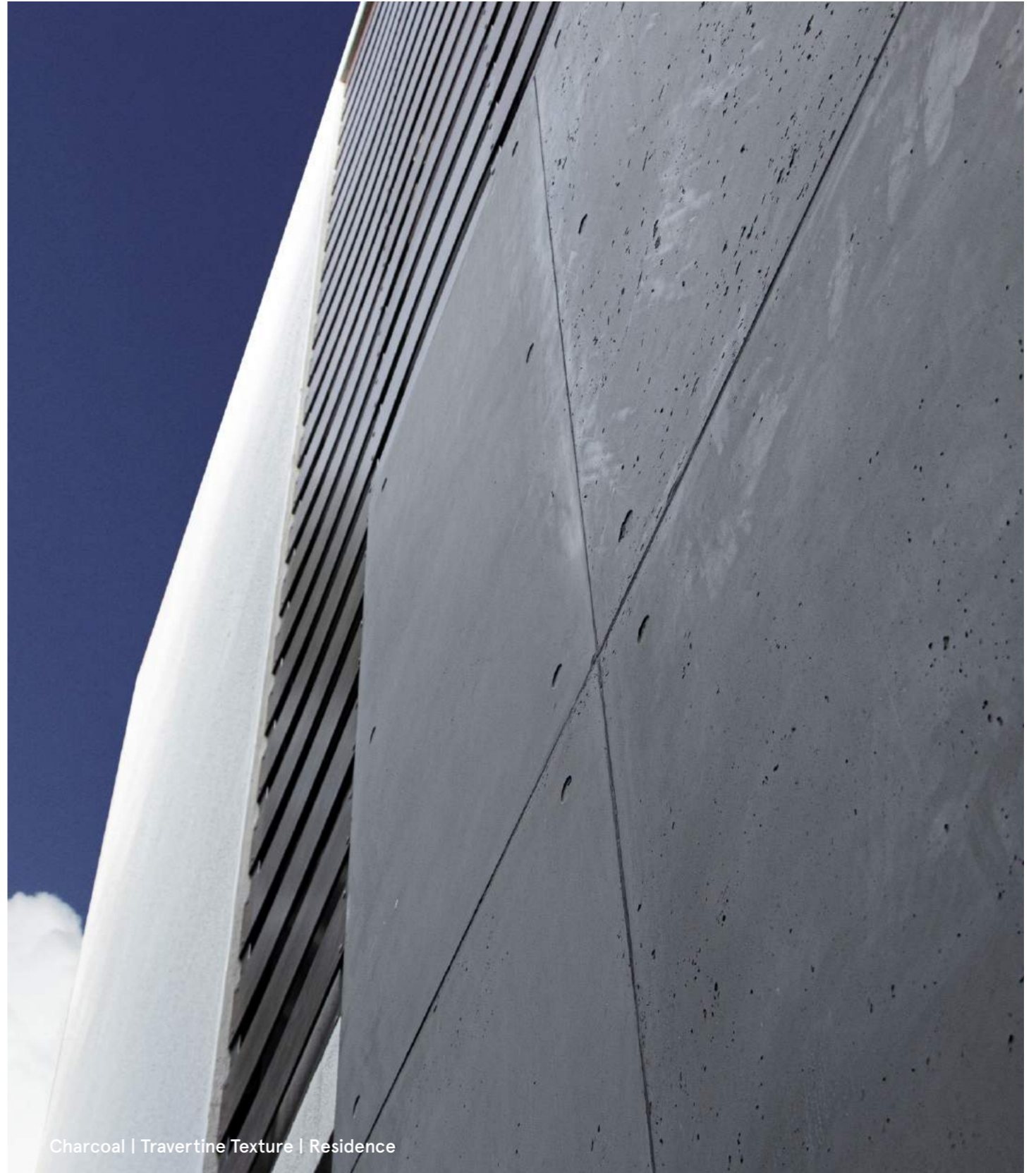
Charcoal | Travertine Texture | Corporate Office



Iced Steel and Charcoal | Travertine Texture | Customised Pattern | Corporate Office



Charcoal | Travertine Texture | Residence



Charcoal | Travertine Texture | Residence



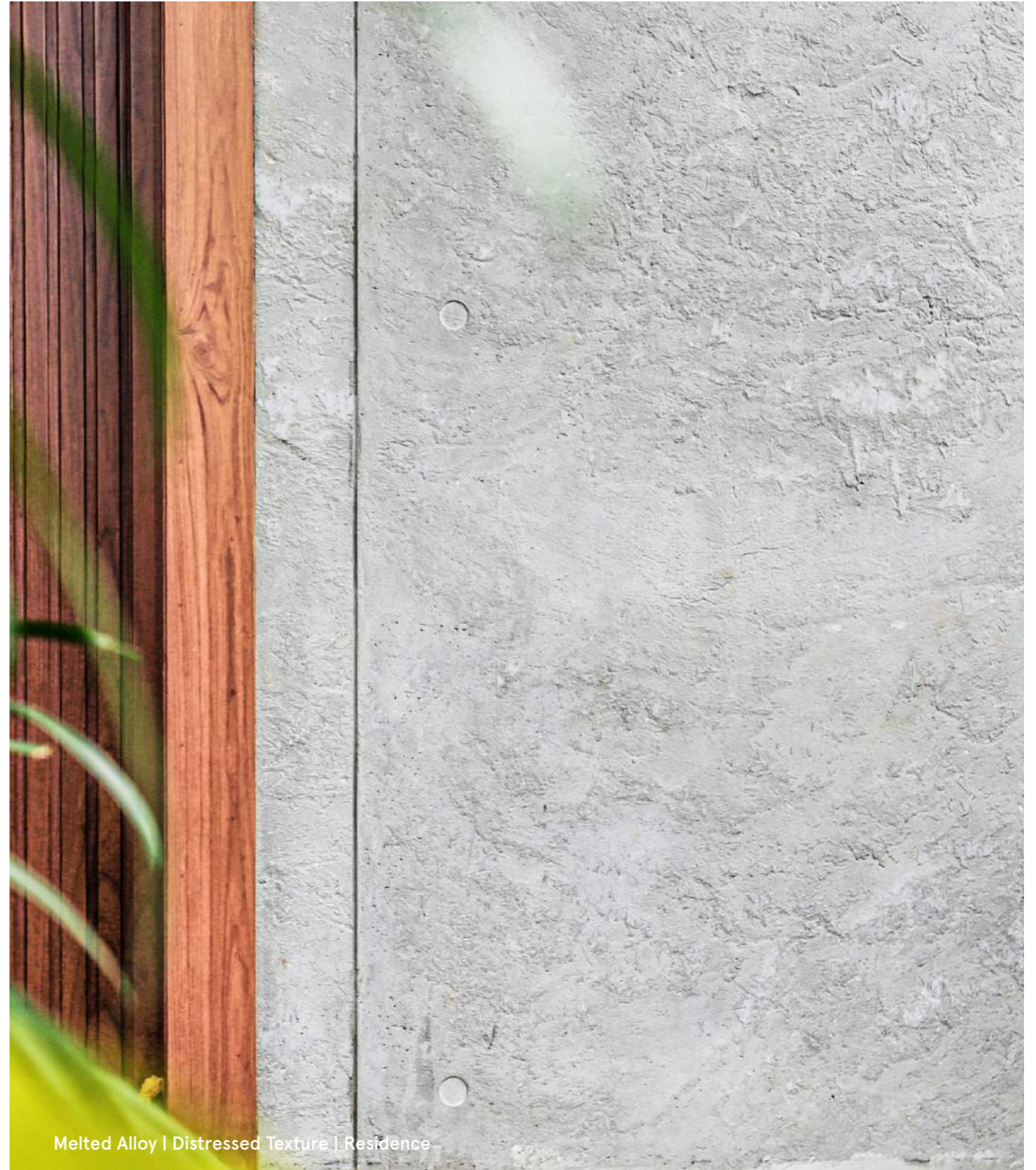
DISTRESSED

Raw, would be the ideal word to describe the Distressed textured wall panels. Abstract tonal variations, appearing natural and non repetitive by nature, gives the panel a rugged appearance. If your requirement demands something rustic, the Distressed Wall panel would be an ideal consideration.

DISTRESSED



Melted Alloy | Distressed Texture | Residence



Melted Alloy | Distressed Texture | Residence



Melted Alloy | Distressed Texture | Residence



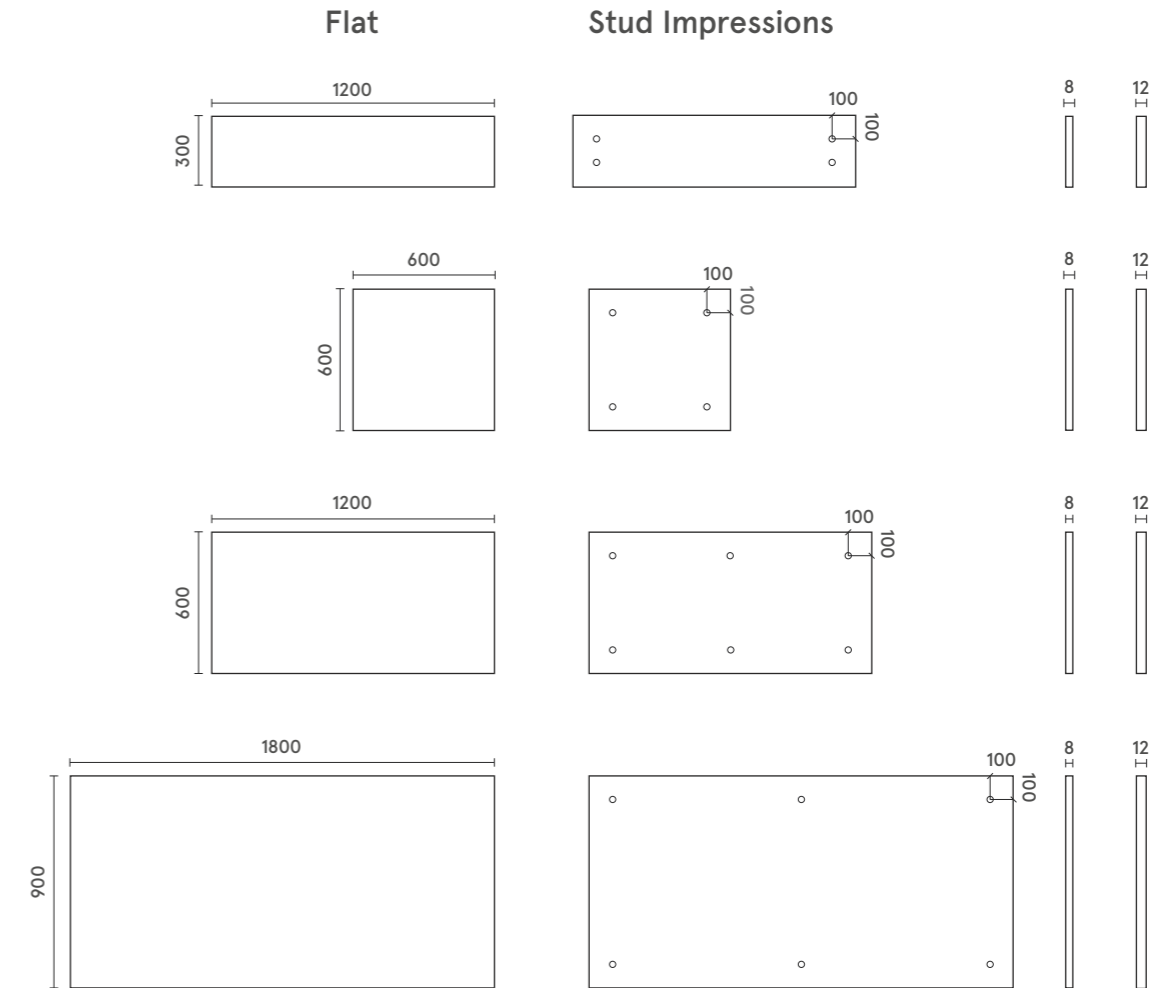
Melted Alloy | Distressed Texture | Residence



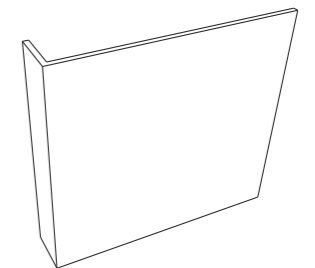
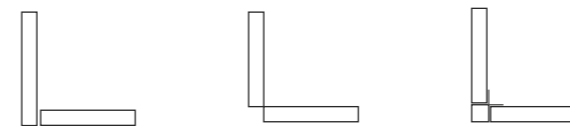
Melted Alloy | Distressed Texture | Residence

FLAT SERIES

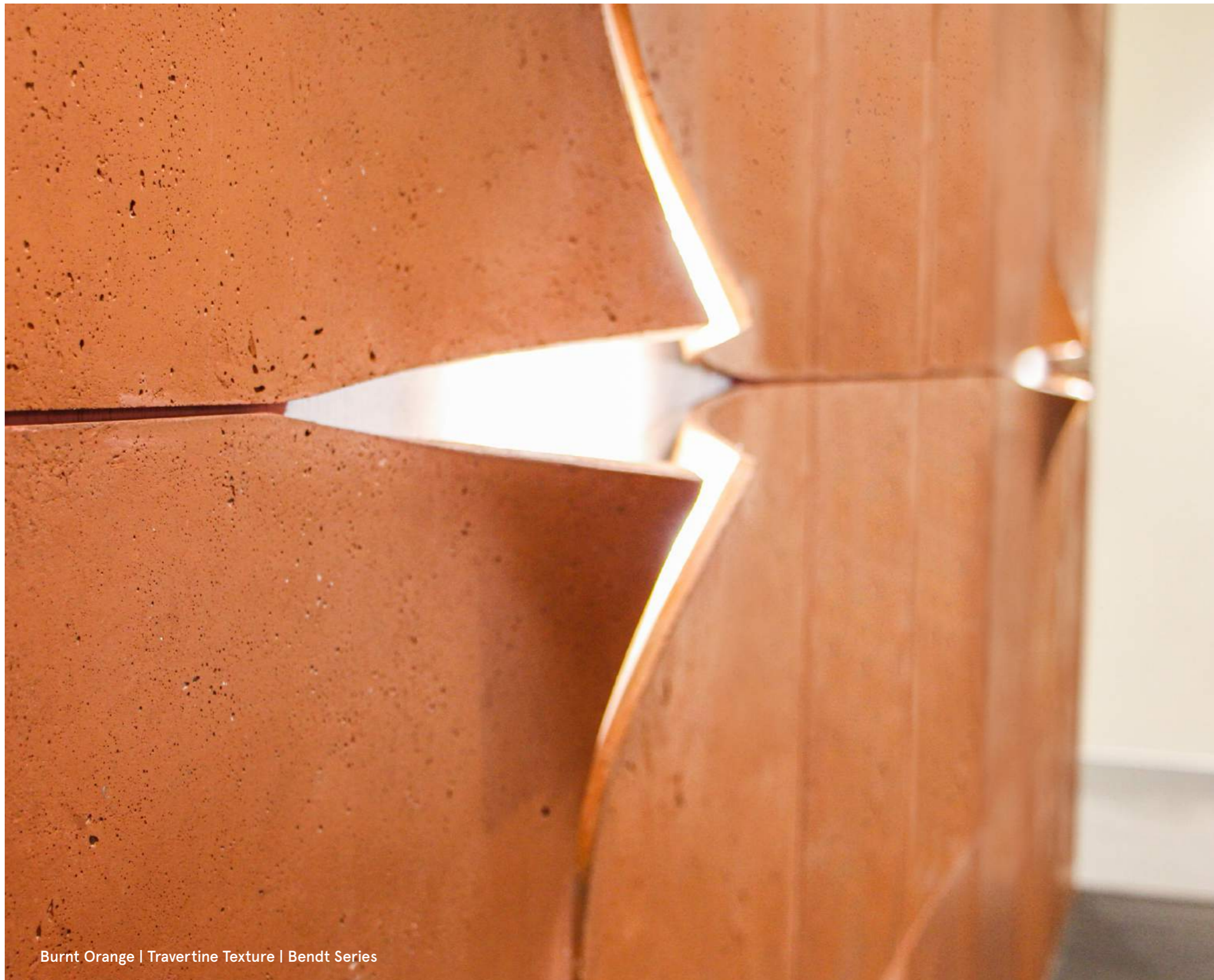
DIMENSIONS



CORNER SOLUTIONS



Edge panels can be custom manufactured.
 Wall panel size and thickness can be customised on specific requirements.



Burnt Orange | Travertine Texture | Bendt Series

BENDT

A slight disruption in pattern becomes a visual treat. The Bendt series offered by Nuance Studio are wall panels that are designed with a bend. The curves appearing on the panels are smooth, giving it a feel of elegance. When enabled with a soft lighting behind the curve, the Bendt series will effortlessly manifest contemporary style, and design.

BENDT SERIES – PEEL_sq

Kuanca
STUDIO

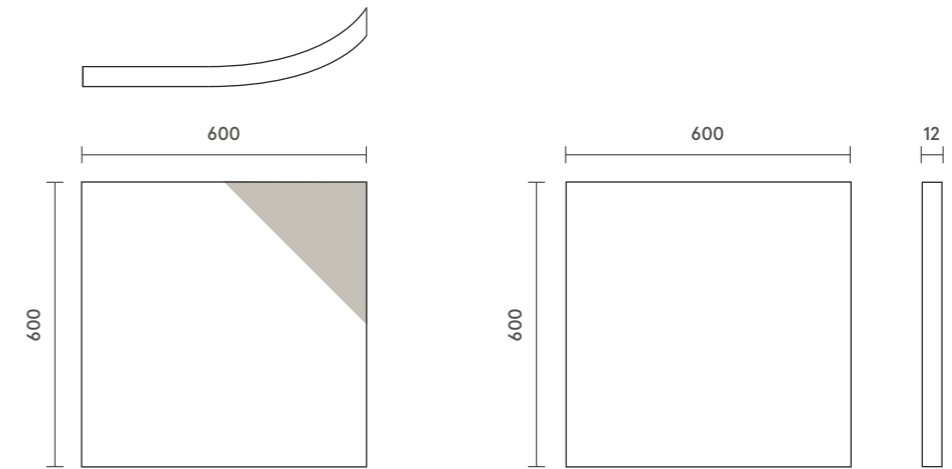
Melted Alloy | Natural Texture | Bendt Series - Peel_sq | Showroom



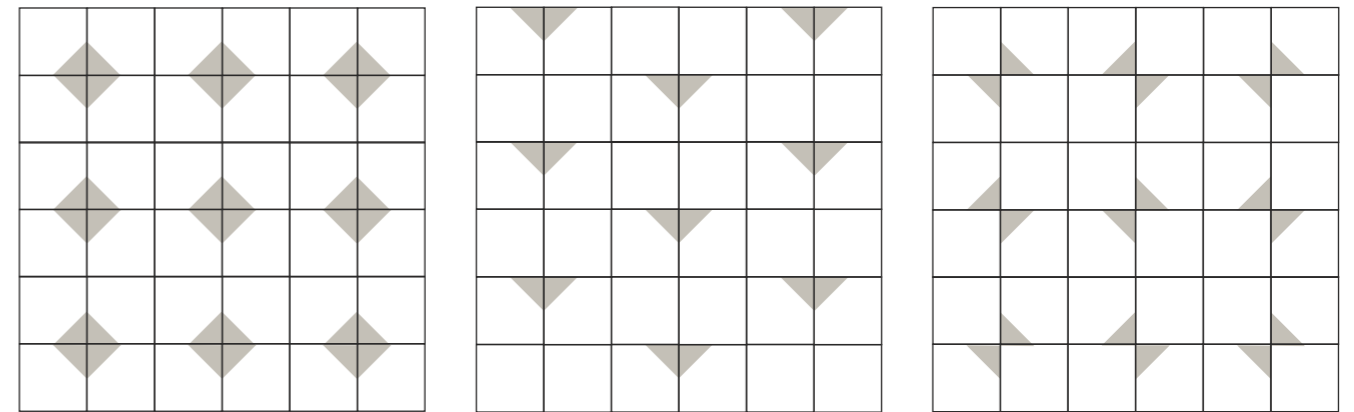
Burnt Orange | Travertine Texture | Bendt Series - Peel_sq | Showroom

BENDT SERIES - PEEL_sq

DIMENSIONS



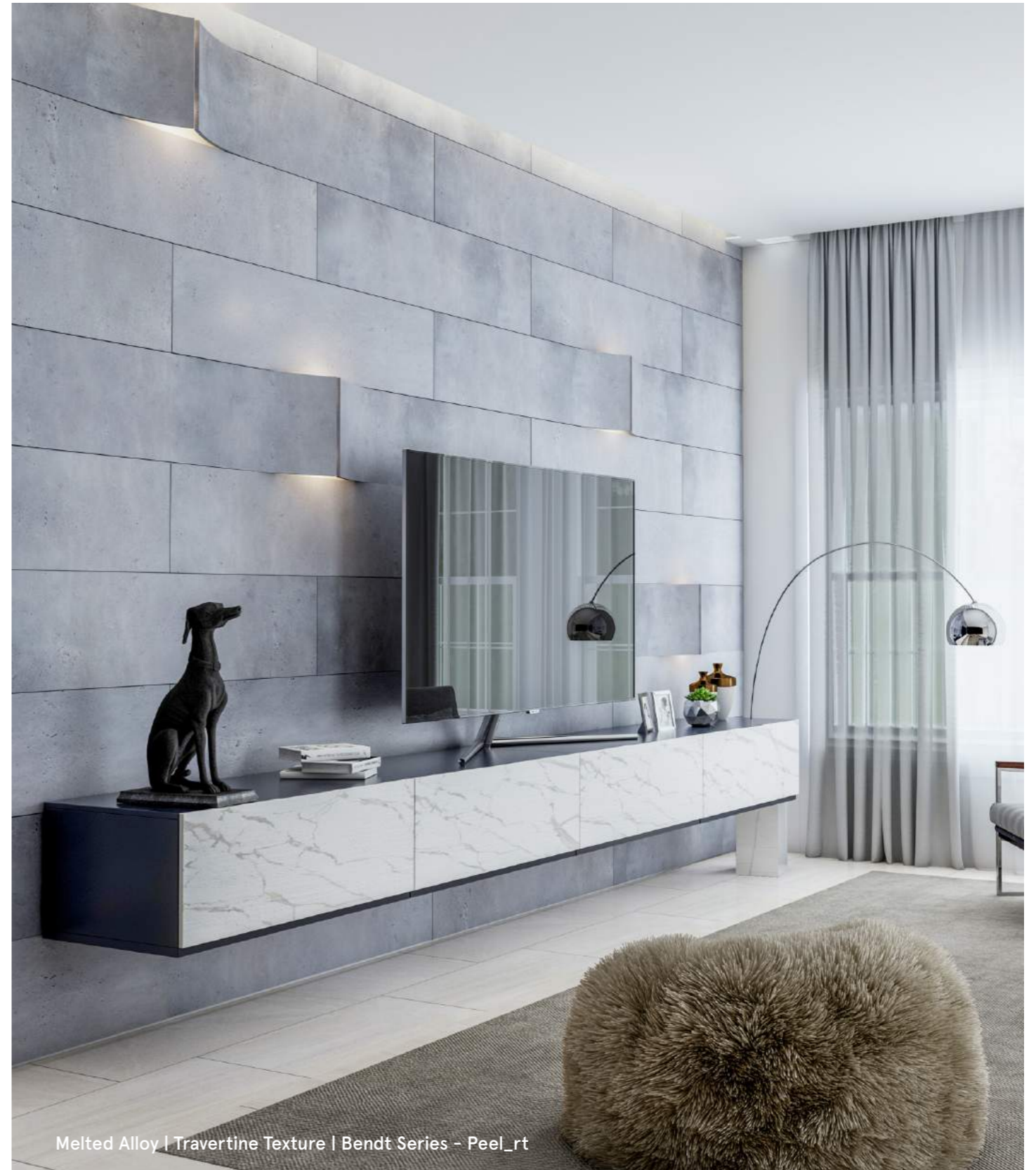
Installation Patterns



BENDT SERIES – PEEL_rt



Melted Alloy | Travertine Texture | Bendt Series - Peel_rt



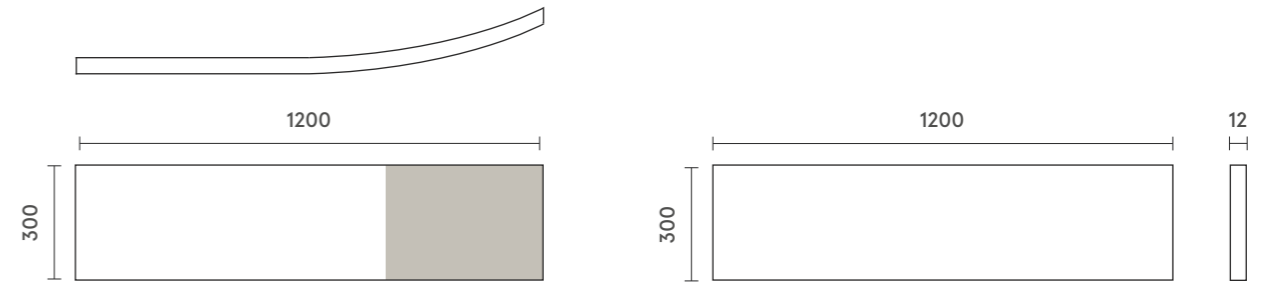
Melted Alloy | Travertine Texture | Bendt Series - Peel_rt



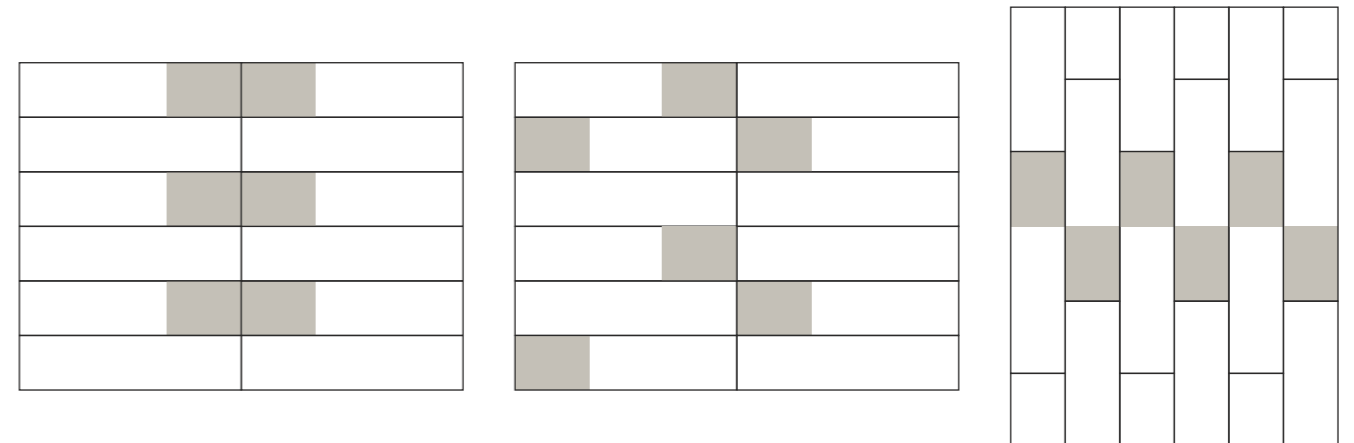
Melted Alloy | Travertine Texture | Bendt Series - Peel_rt

BENDT SERIES - PEEL_rt

DIMENSIONS



Installation Patterns



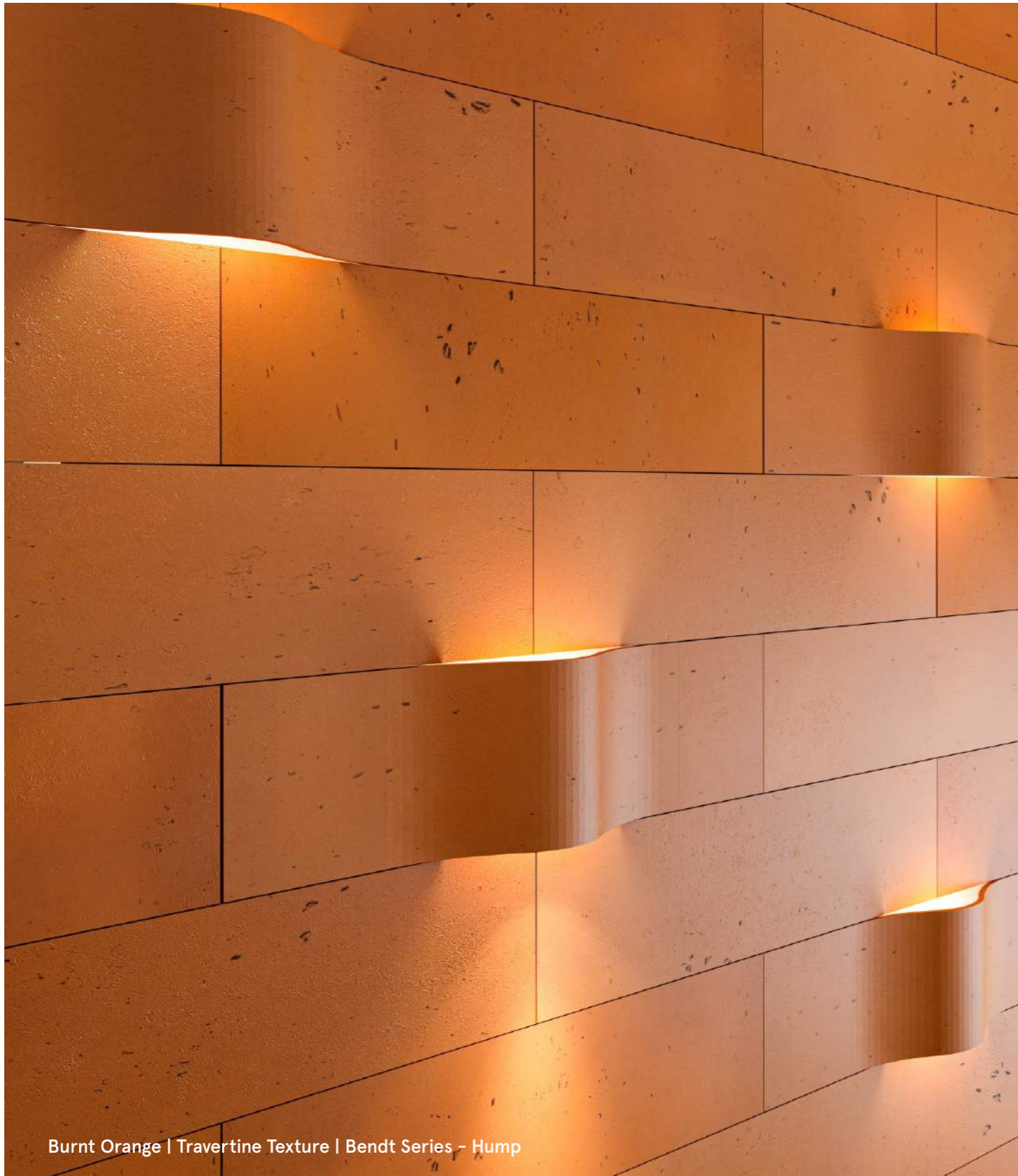
BENDT - HUMPH



Burnt Orange | Travertine Texture | Bendt Series - Hump



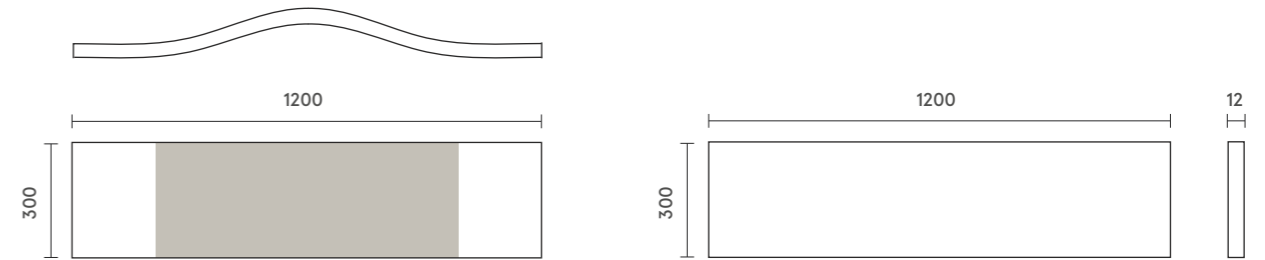
Melted Alloy | Travertine Texture | Bendt Series - Hump



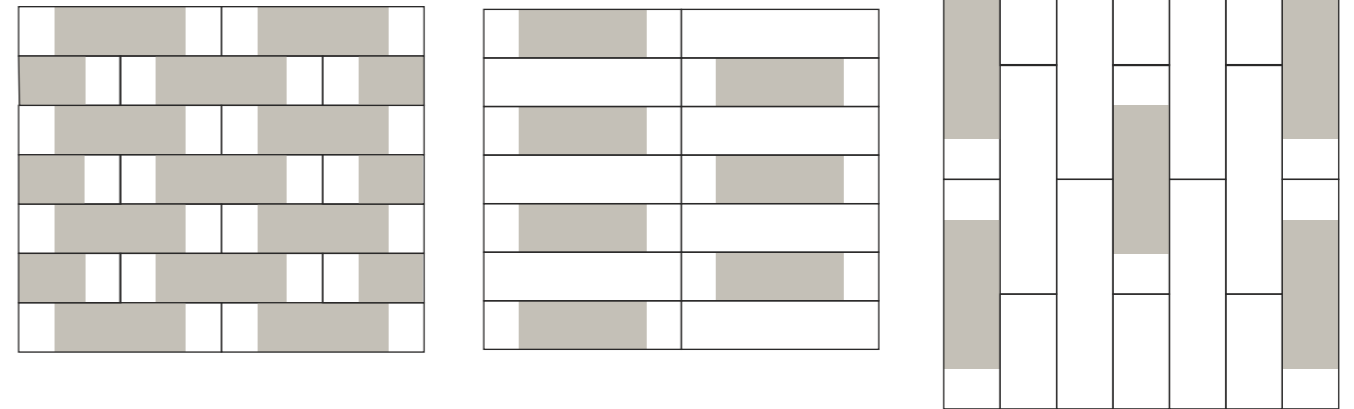
Burnt Orange | Travertine Texture | Bendt Series - Hump

BENDT SERIES - HUMP

DIMENSIONS



Installation Patterns





FUJI

The design is inspired by the beautiful and poetic reflections of Mount Fuji in the five lakes, creating bands of changing density of landscape visually. Also it looks to the Mount Fuji's depiction in Ukiyoe paintings of Katsushika Hokusai.

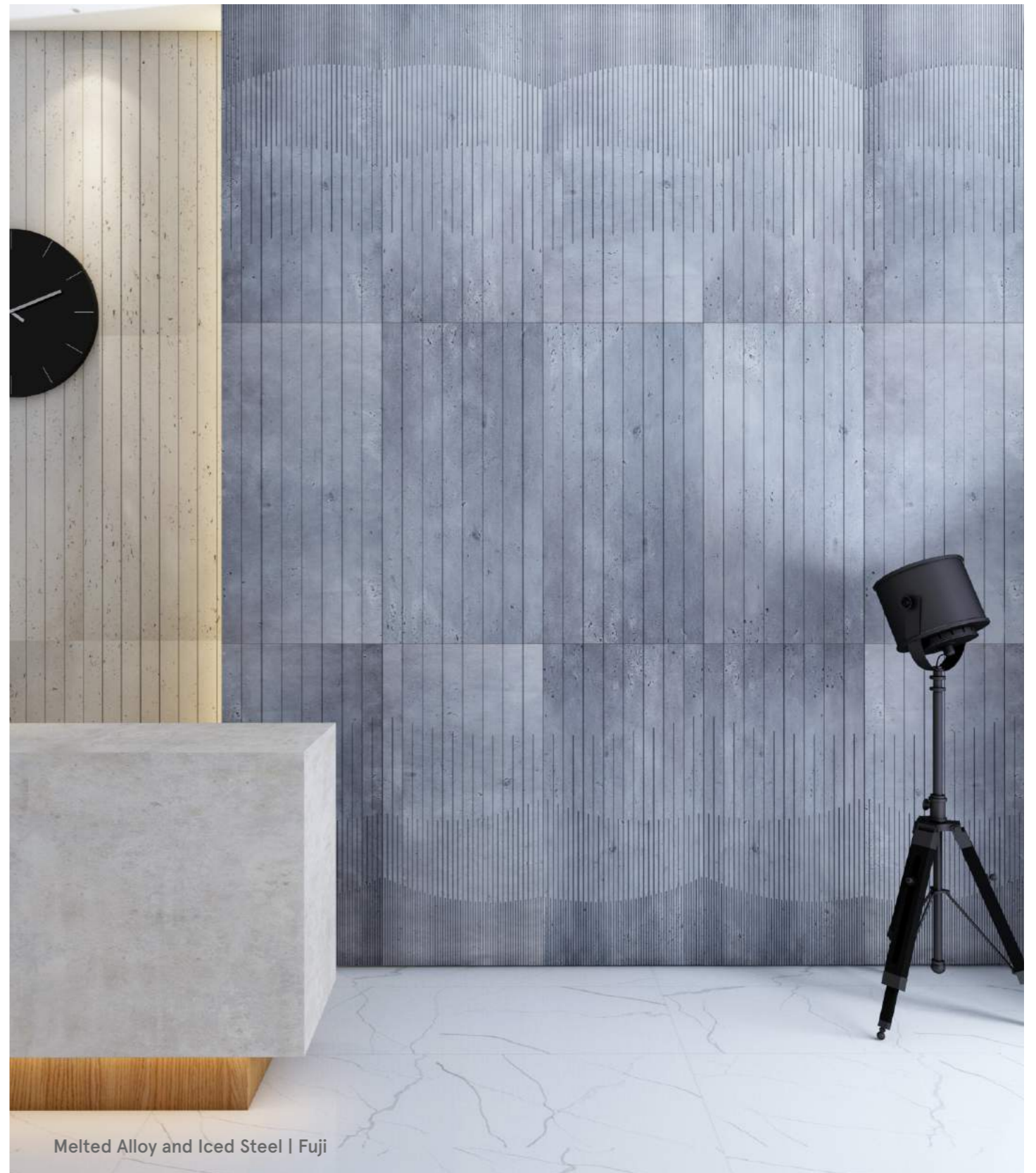
The collection has three panels that can be used by Architects and Designers in numerous combinations to create patterns of their own. The beauty is that every combination is unique in itself; this interaction would result in a signature wall installation that is quite unique. The flutes are engineered in a way that they are dust resistant with their soft inner corners and can easily be cleaned with just water-spray.

Designed by

SFDW



Melted Alloy | Fuji



Melted Alloy and Iced Steel | Fuji

FUJI

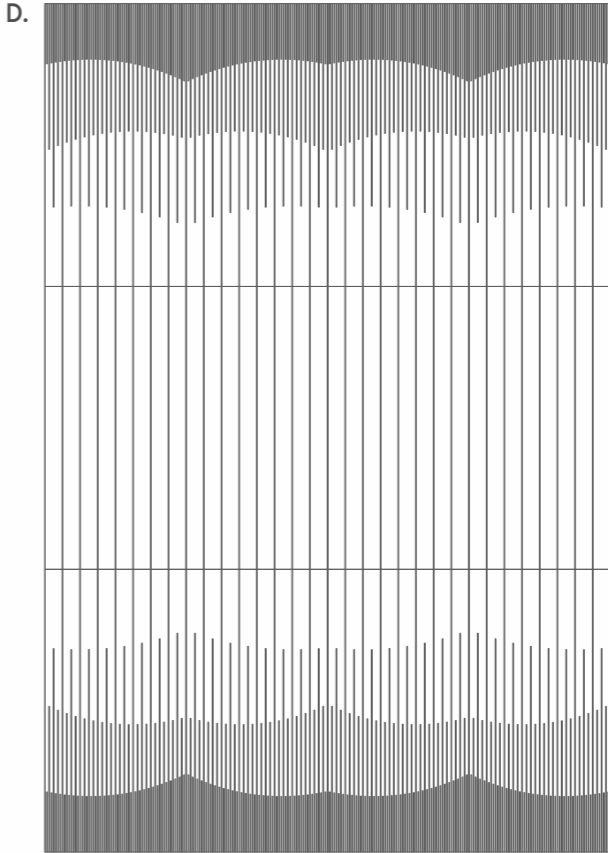
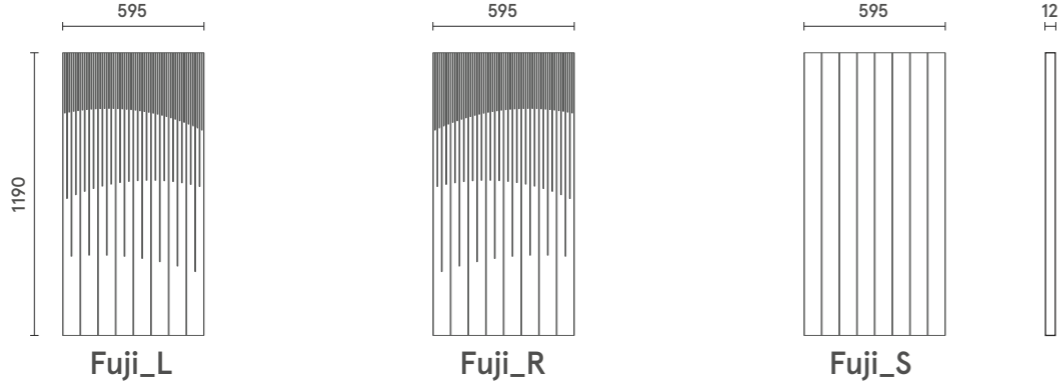


Melted Alloy | Fuji Series

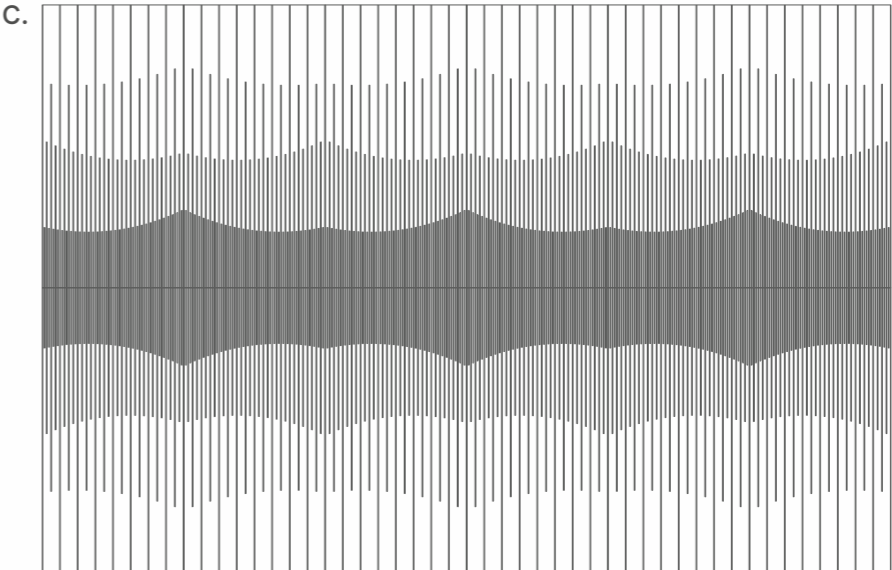
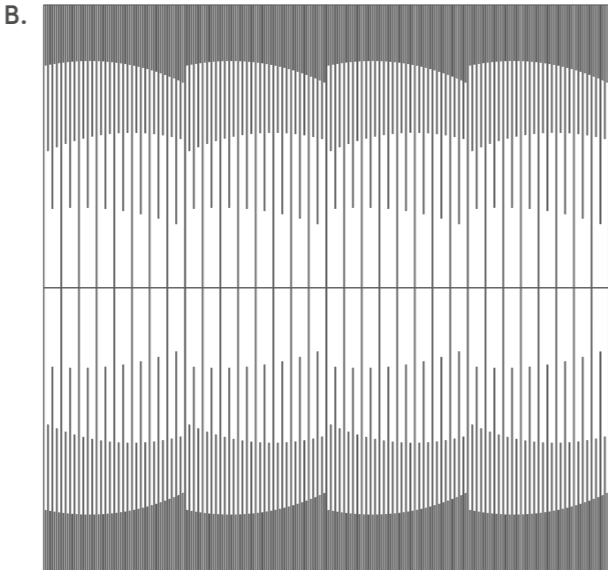
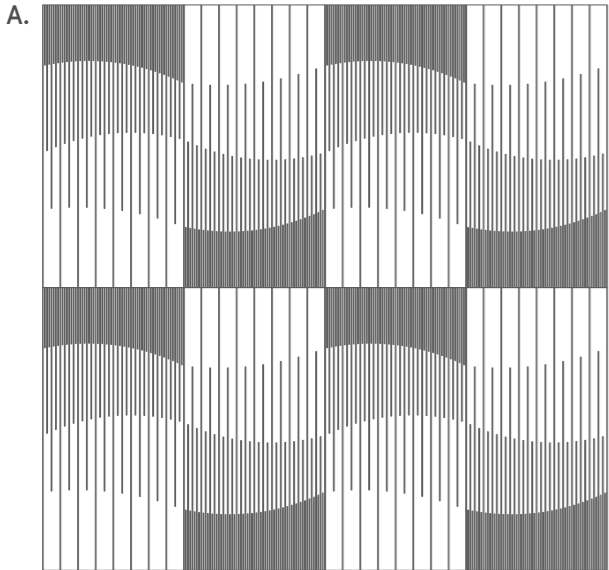


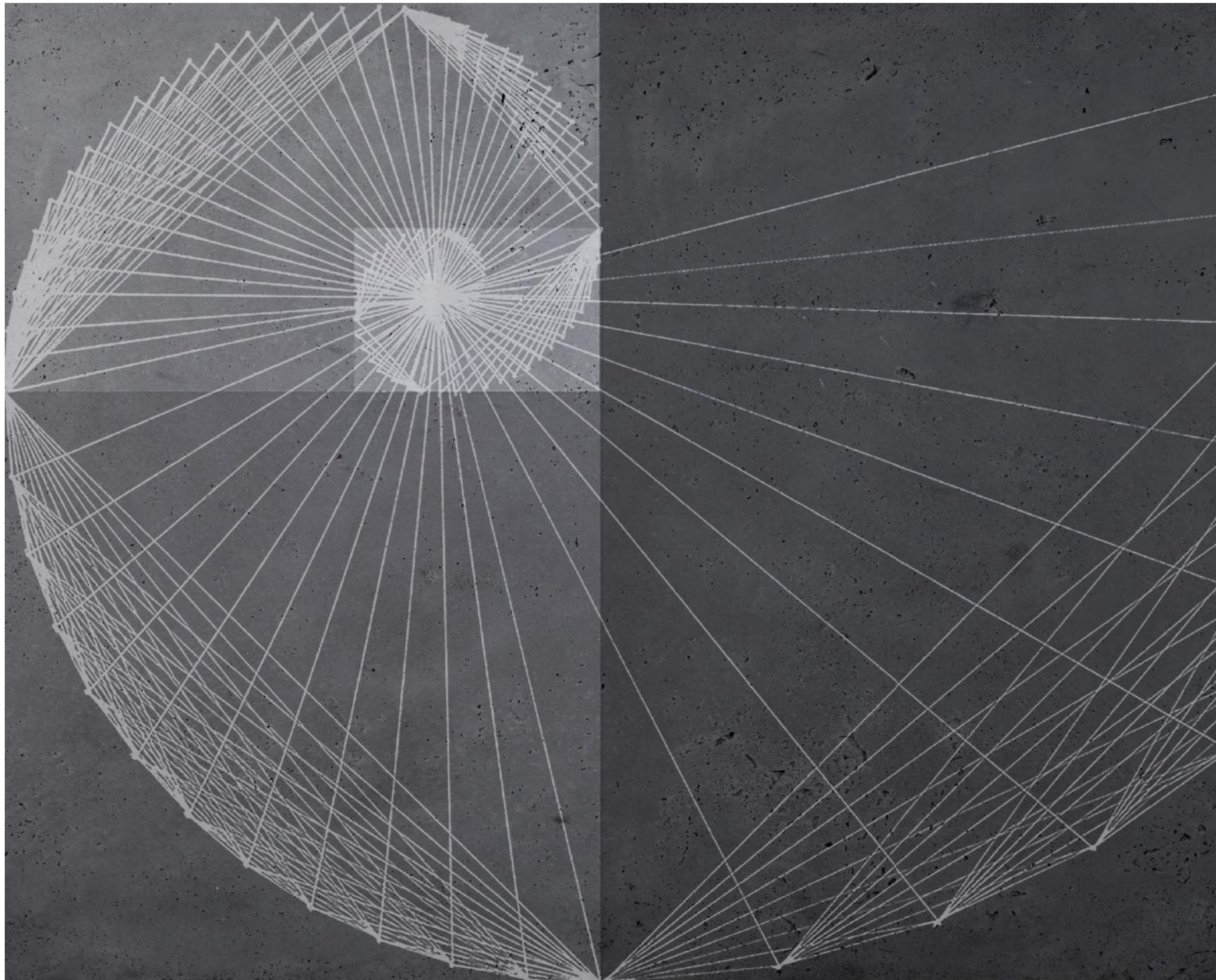
FUJI

DIMENSIONS



Installation Patterns





FIBONACCI

Inspired by the golden ratios from nature, Nuance Studio introduces Fibonacci series where the width of each panel is derived from the principle of Fibonacci. The multiple panels can be installed in the Fibonacci sequence or can be tessellated in infinite combinations to make each wall truly unique.

Designed by

SFDW

Winner of



FIBONACCI



Melted Alloy | Travertine texture | Fibonacci Series

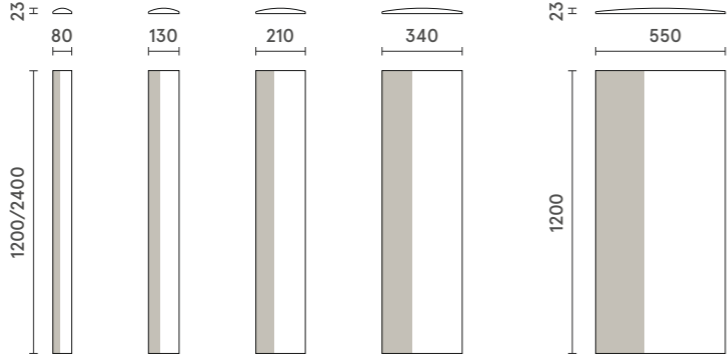




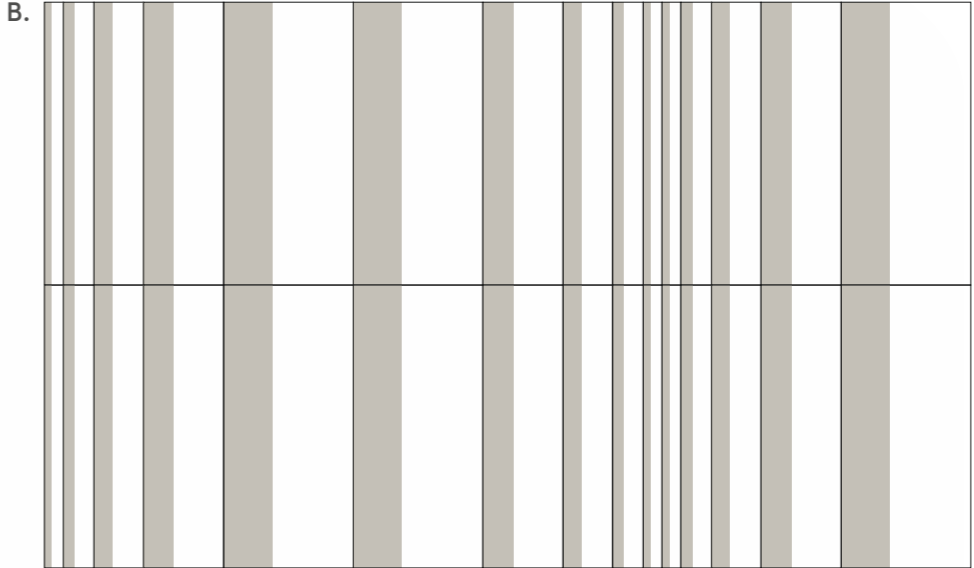
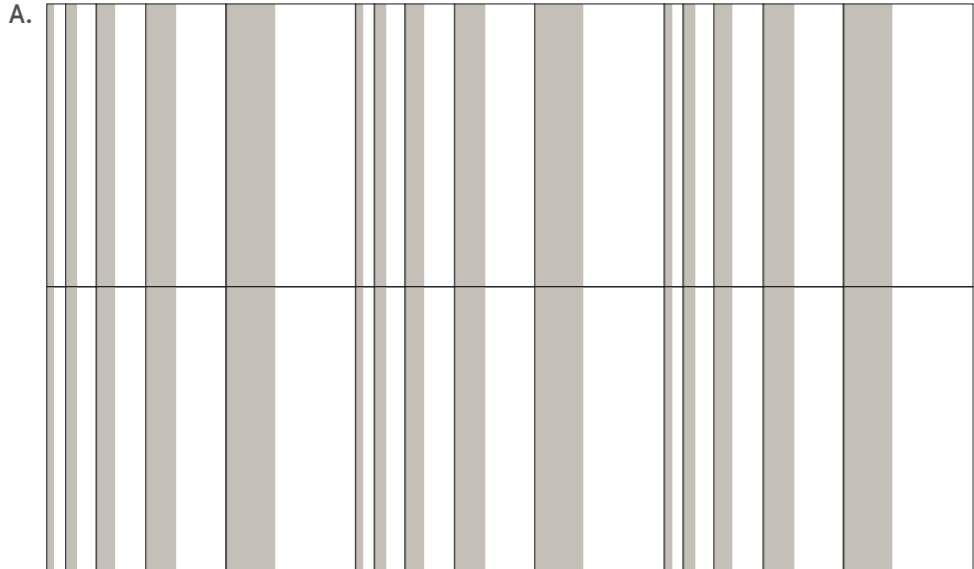
Melted Alloy | Travertine Texture | Fibonacci Series

FIBONACCI SERIES

DIMENSIONS



Installation Patterns



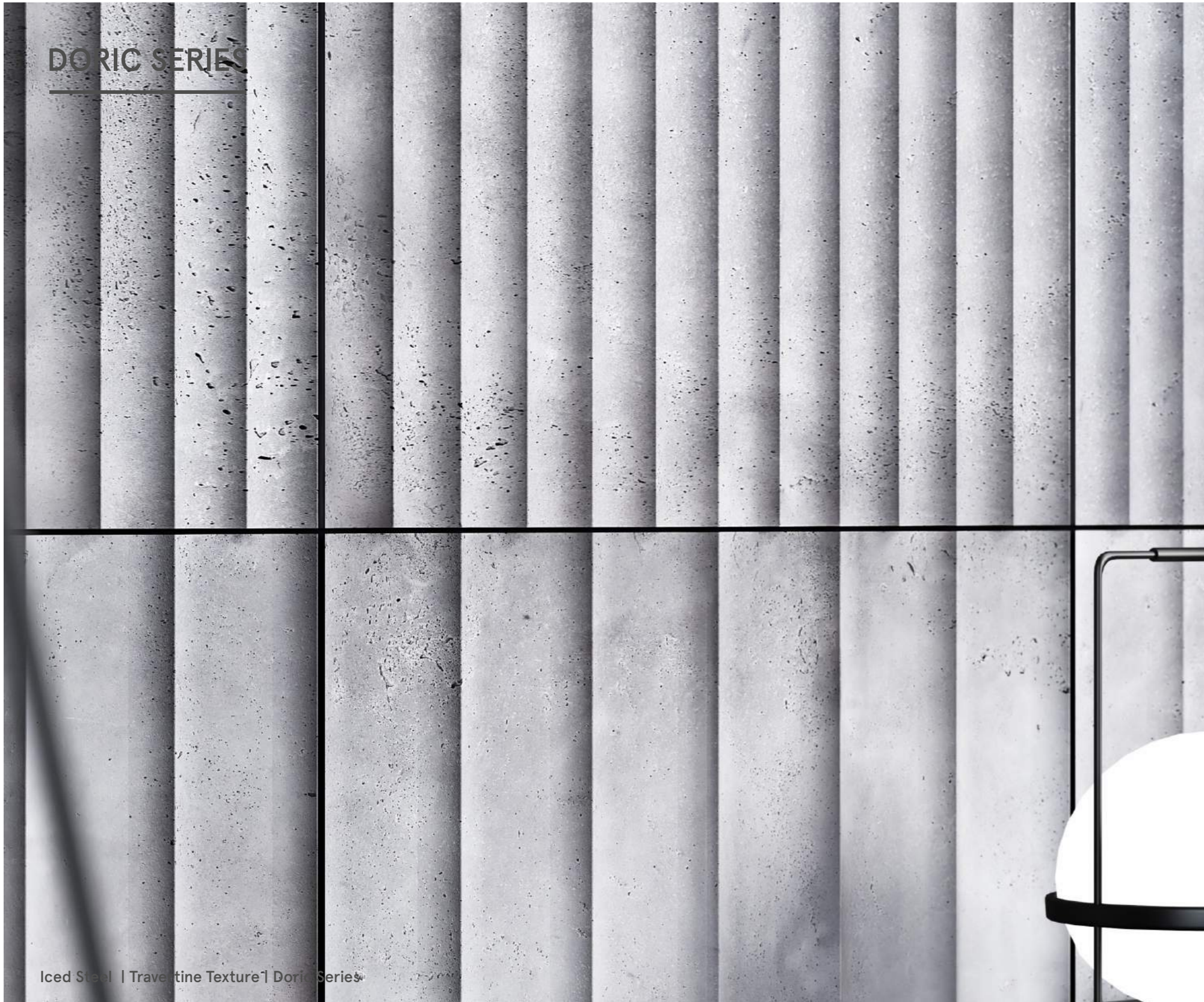


DORIC SERIES

Inspired by the Classical Greek design language, Nuance Studio introduces the “Doric series”. The Doric series is timeless and reflects the new phase of design where classicism meets minimalism. These panels pay homage to the unique characteristics of the shaft from the Doric order. This series is specifically designed to echo the character of noble sobriety, primitive simplicity, incorruptibility, purity, and trustworthiness, Nuance studio would like to introduce these values in your spaces.

The Doric pillars are known for their massive size and sturdiness, Nuance studio mimics the massive proportions of the pillars by manufacturing the panels in 900x2700mm.

DORIC SERIES



Iced Steel | Travertine Texture | Doric Series

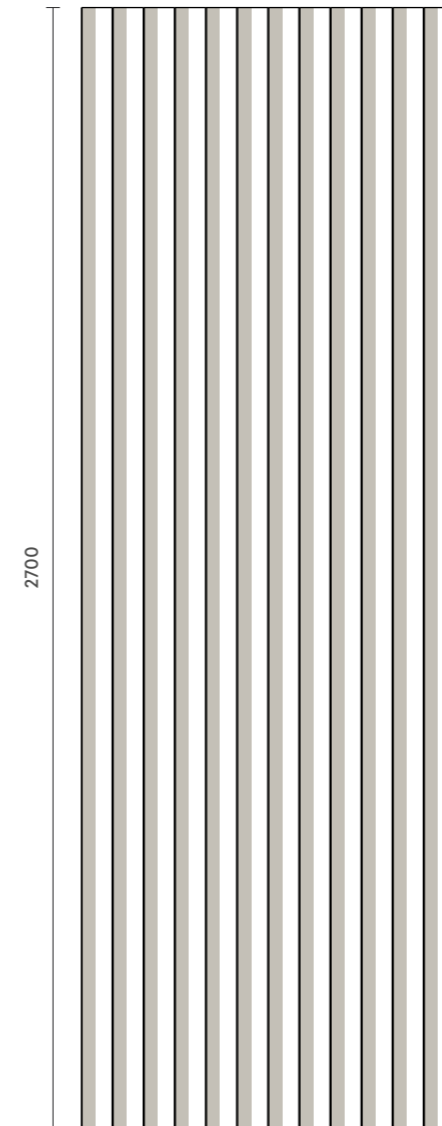
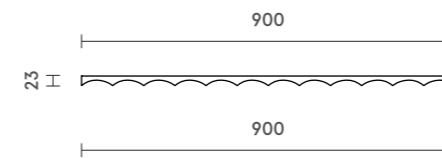




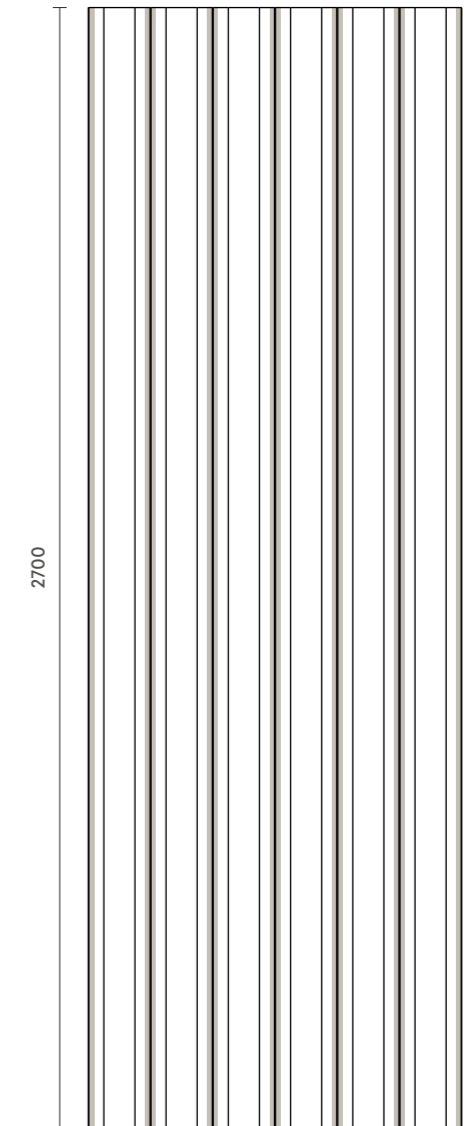
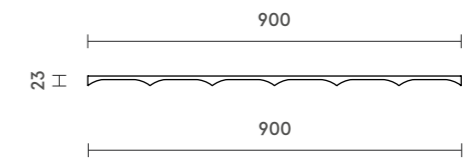
Iced Steel | Travertine Texture | Doric Series

DORIC SERIES

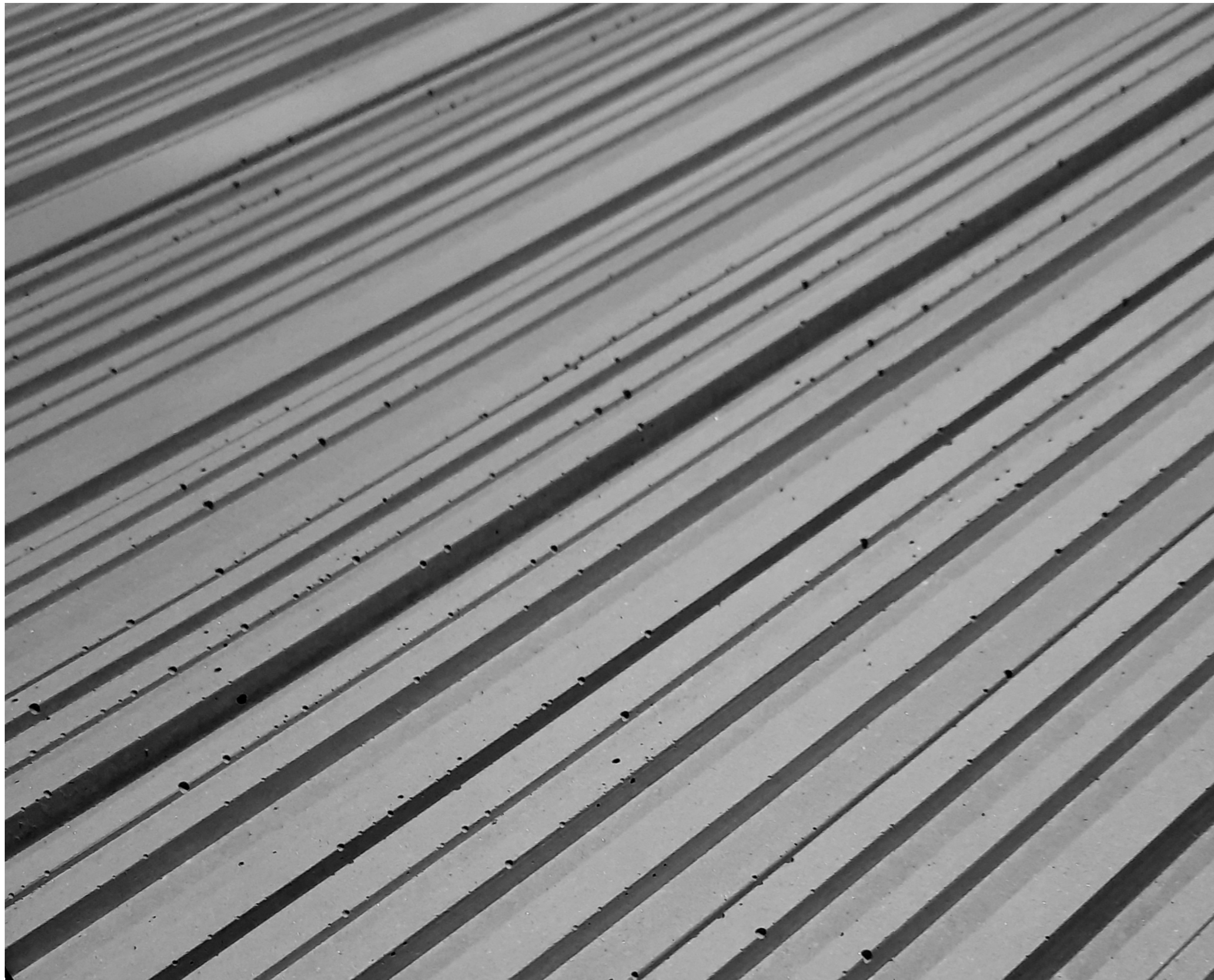
DIMENSIONS



Doric_75



Doric_150



RIBBED SERIES

The fusion of geometric and computational logic with architectural principles gave birth to the parametric design. Our parametric wall panels provide an aesthetic ambience with their raw natural appeal. Designed with algorithmic parameters, these panels are as robust as they are visually appeasing. The distinct protuberances play with the lighting like a soothing visual melody. The naturally formed blemishes on the surface add to the timelessness. Created by exploring and redefining the intrinsic relationships between elements, these parametric wall panels will be the pièce de résistance of your space.

RIBBED SERIES



Lead Steel | Natural Texture | Ribbed Series

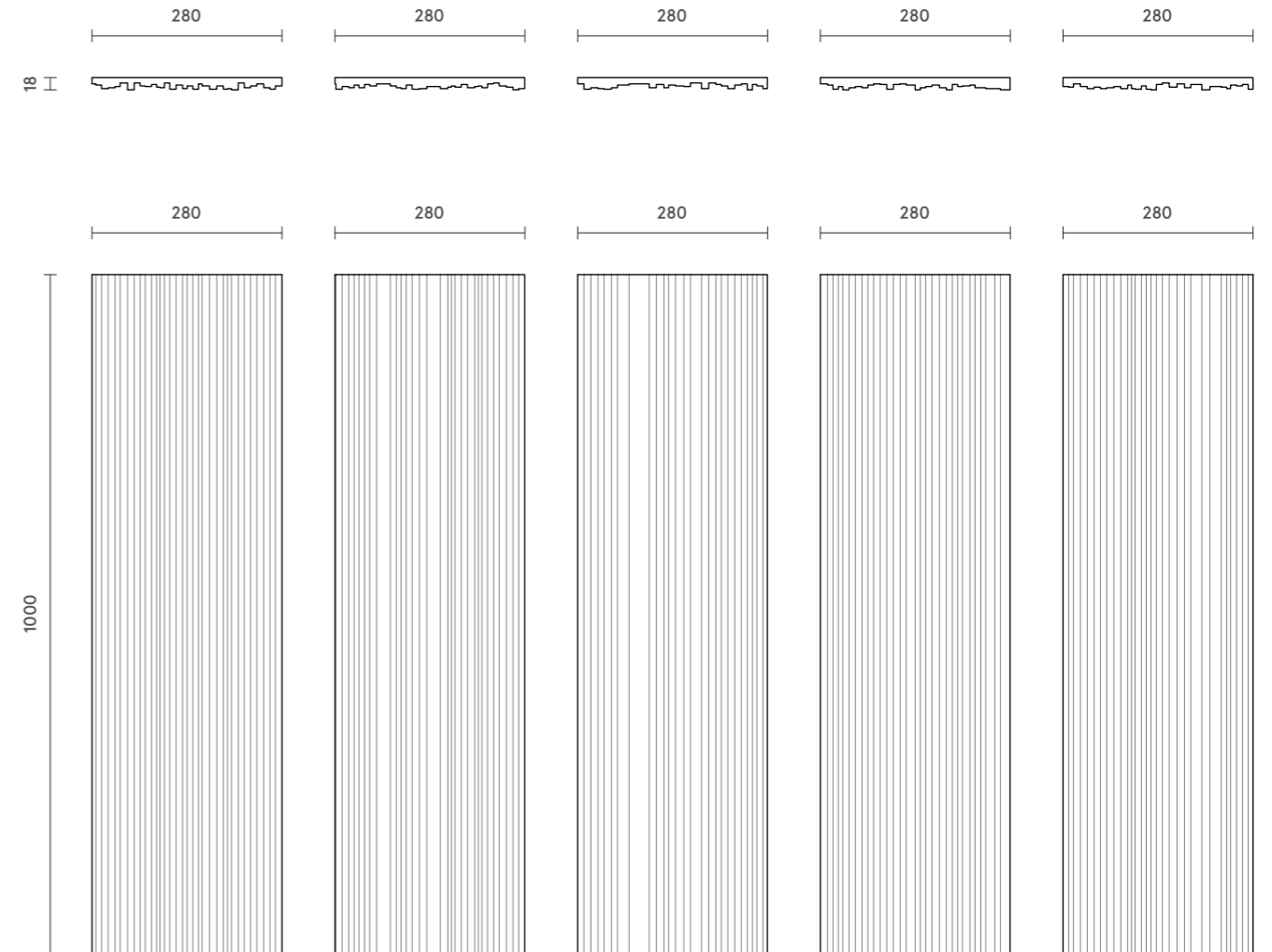


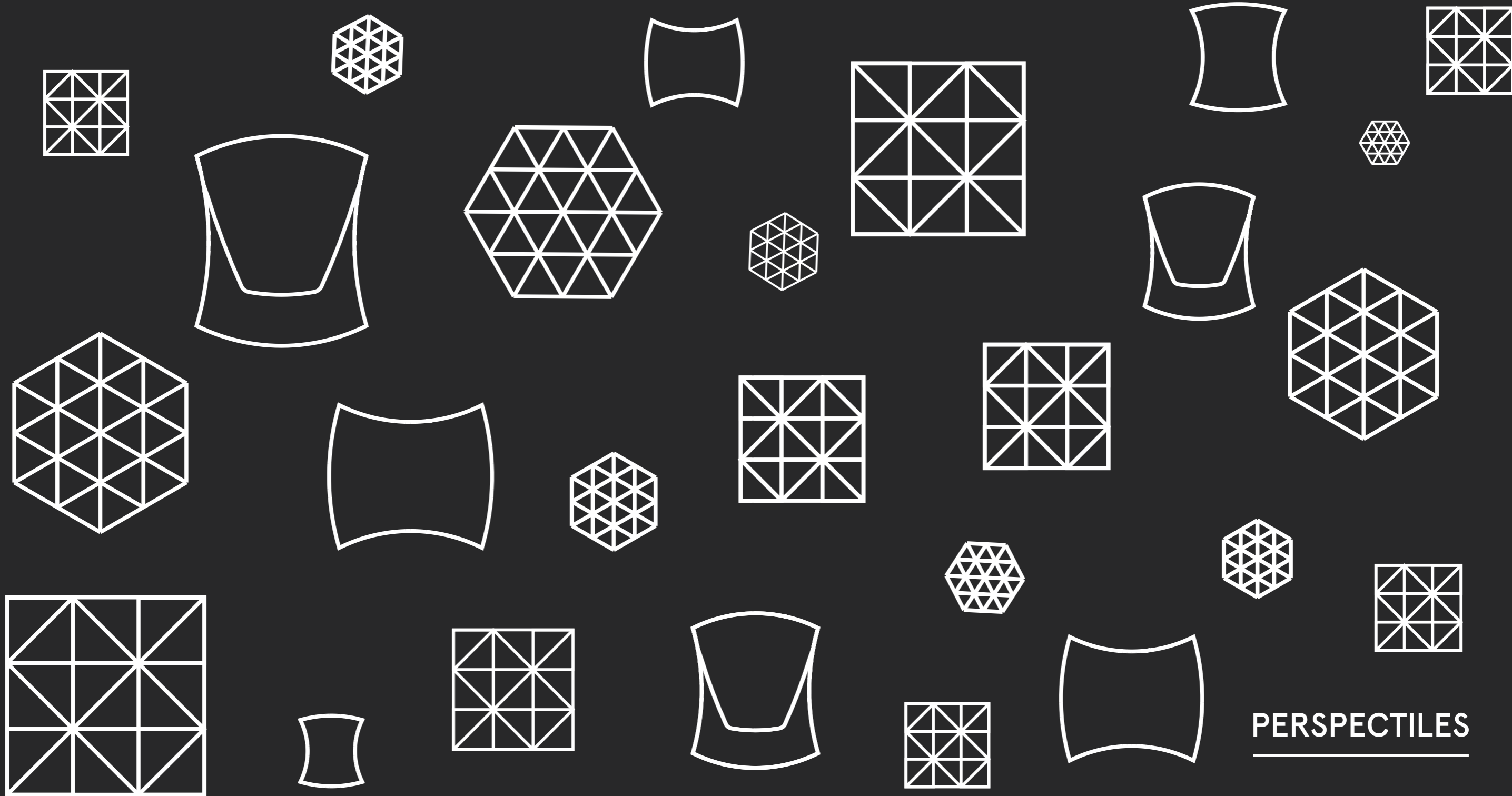


Iced Steel | Natural Texture | Ribbed Series

RIBBED SERIES

DIMENSIONS





PERSPECTILES



FRACTAL

A Play of Light and Shadows... Inspired by facets of a diamond, Fractal adds a new perspective to the walls. It makes the walls dynamic and reminds us that life is more than static!

FRACTAL



Desert Dune | Natural Texture | Fractal

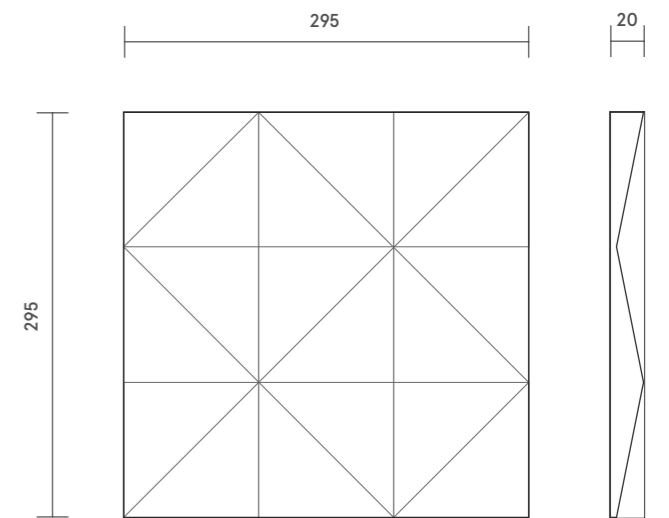


Melted Alloy | Travertine Texture | Fractal



Charcoal | Travertine Texture | Fractal

FRACTAL DIMENSIONS





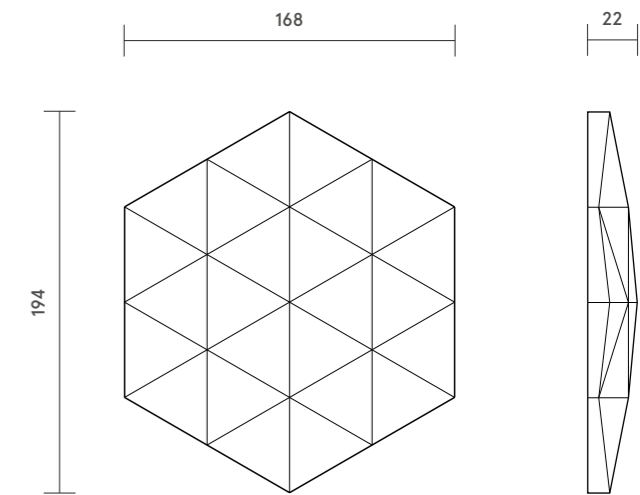
CARAPACE

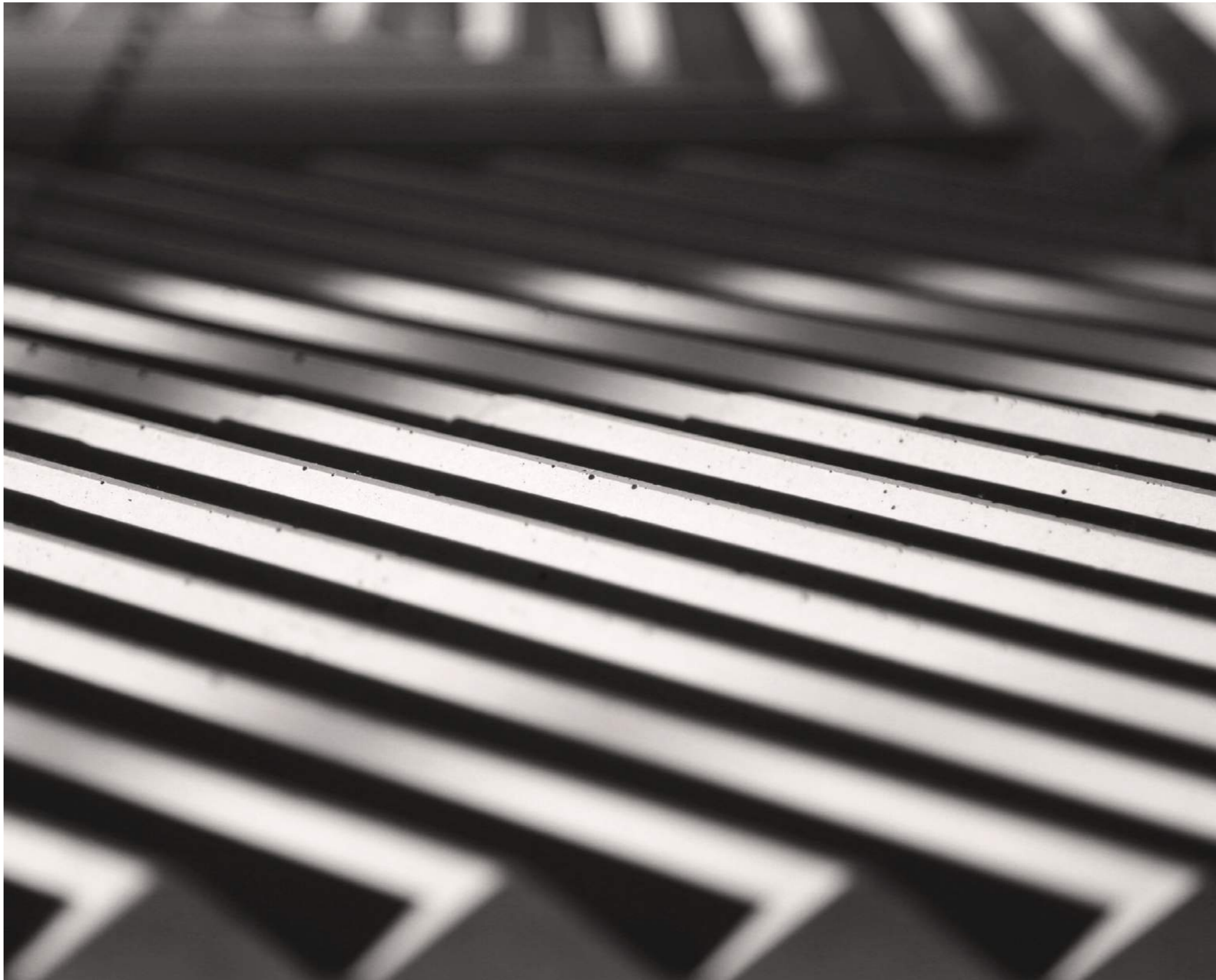
A Play of Light and Shadows... Inspired by facets of a diamond, Fractal adds a new perspective to the walls. It makes the walls dynamic and reminds us that life is more than static!



Charcoal and Melted Alloy | Travertine Texture | Carapace

CARAPACE DIMENSIONS





LINEA

The Linea Series, designed specifically for those who don't want to settle for cliché! Along with the aesthetic appeal of concrete, Linea Series gives an edge to the designer to create innumerable patterns that would suite their design language. Simple to complex patterns can be made that dresses the wall with the right attitude and look!

LINEA SERIES



Melted Alloy | Travertine Texture | Linea 90 and Linea 180



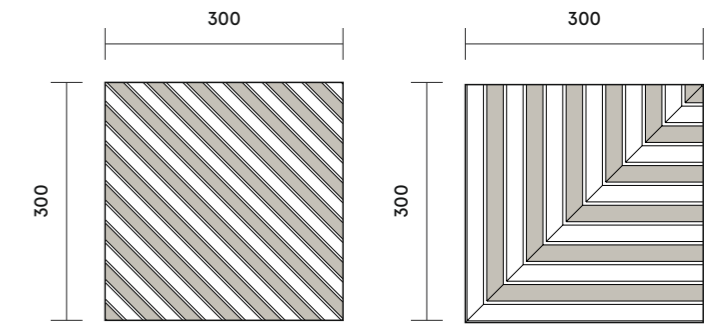
Burnt Orange | Natural Texture | Linea 45 Close-up



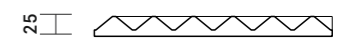
Melted Alloy | Travertine Texture | Linea 45

LINEA SERIES

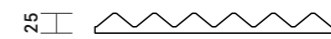
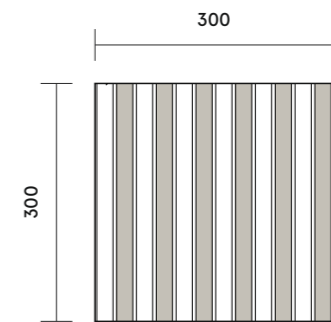
DIMENSIONS



Linea 45°



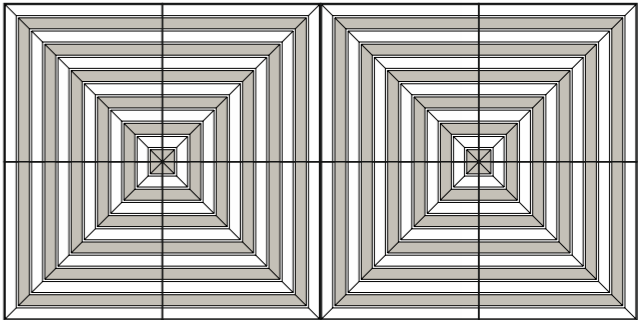
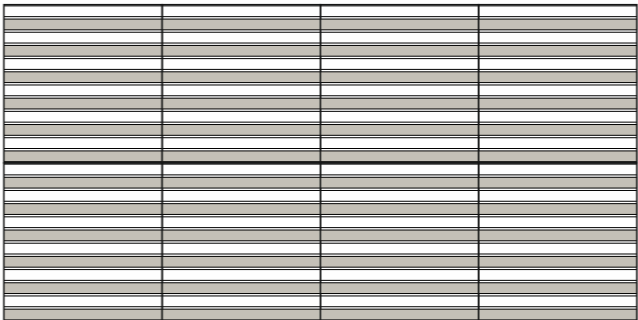
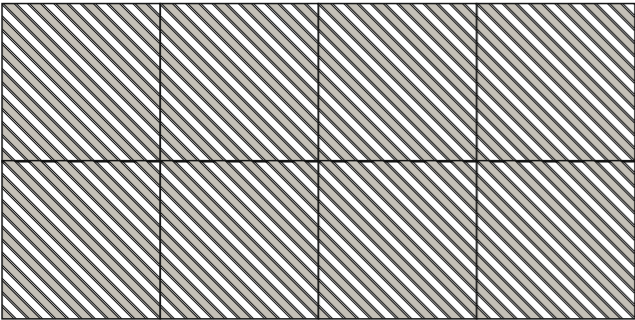
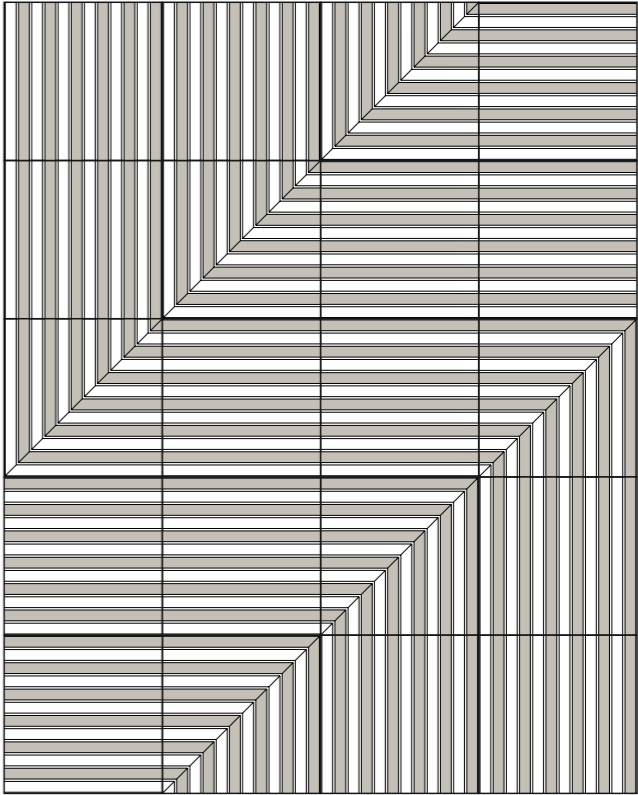
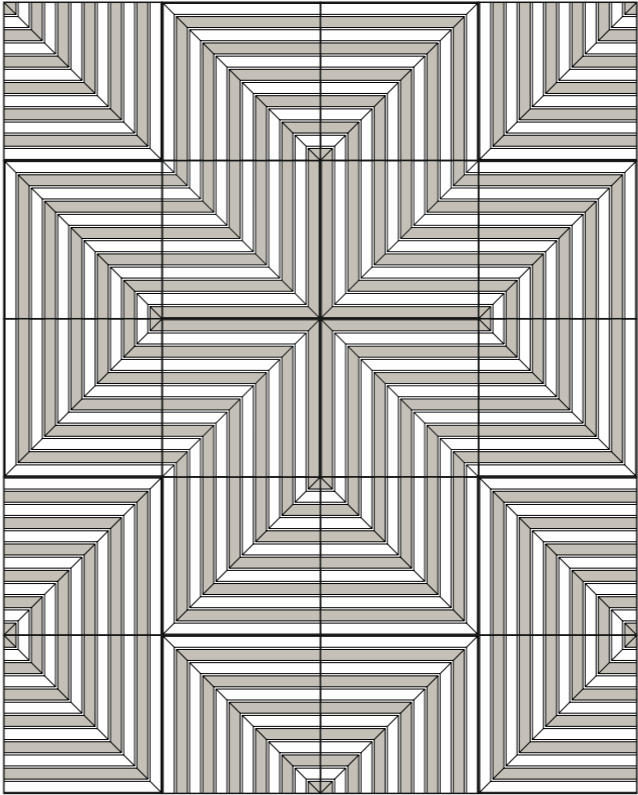
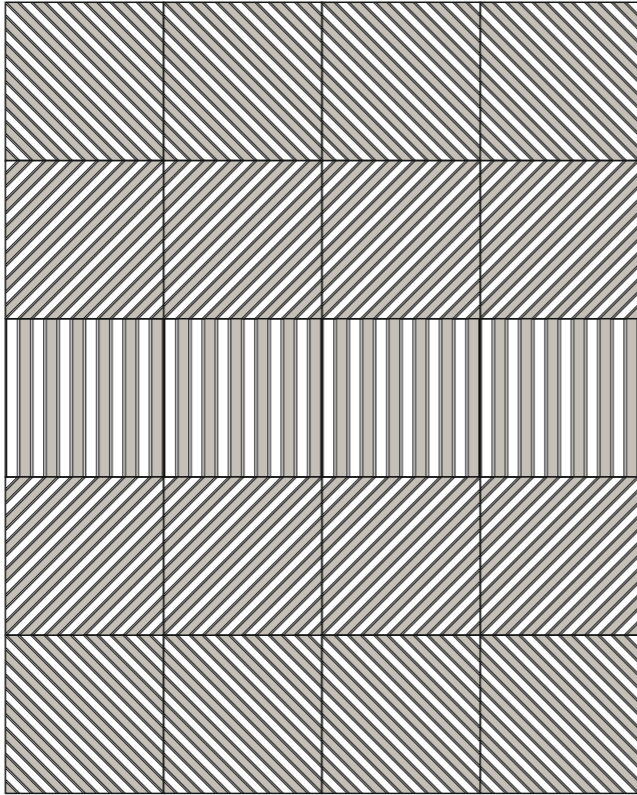
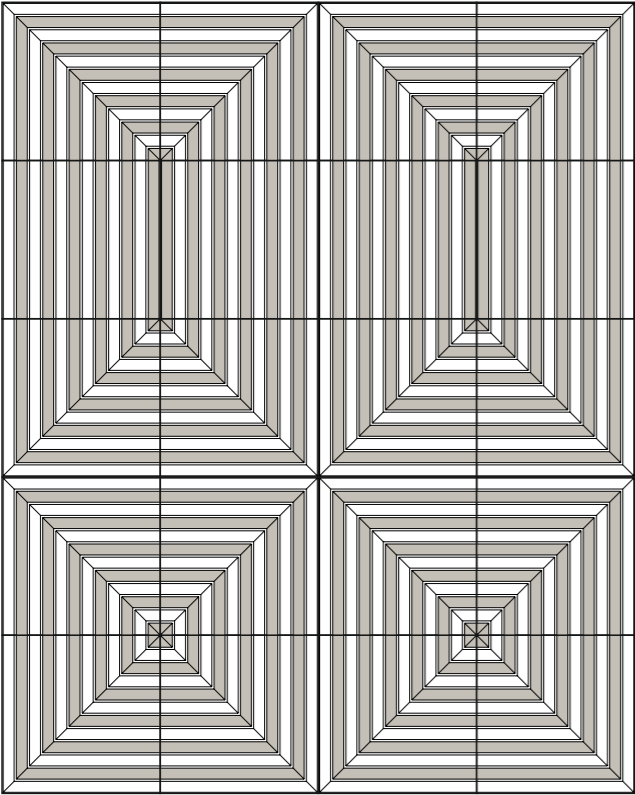
Linea 90°

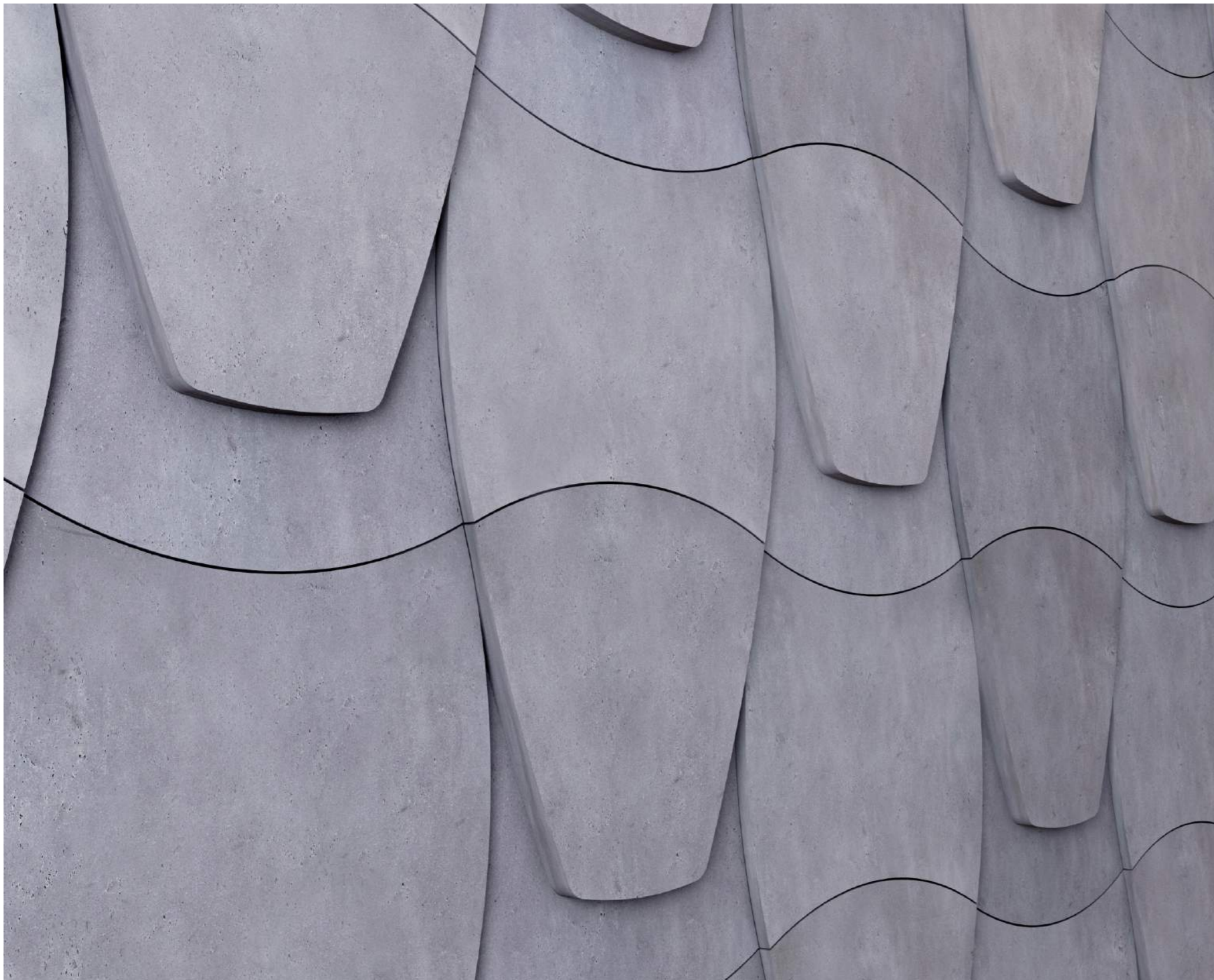


Linea 180°

LINEA SERIES

Installation Patterns





SQUAMA

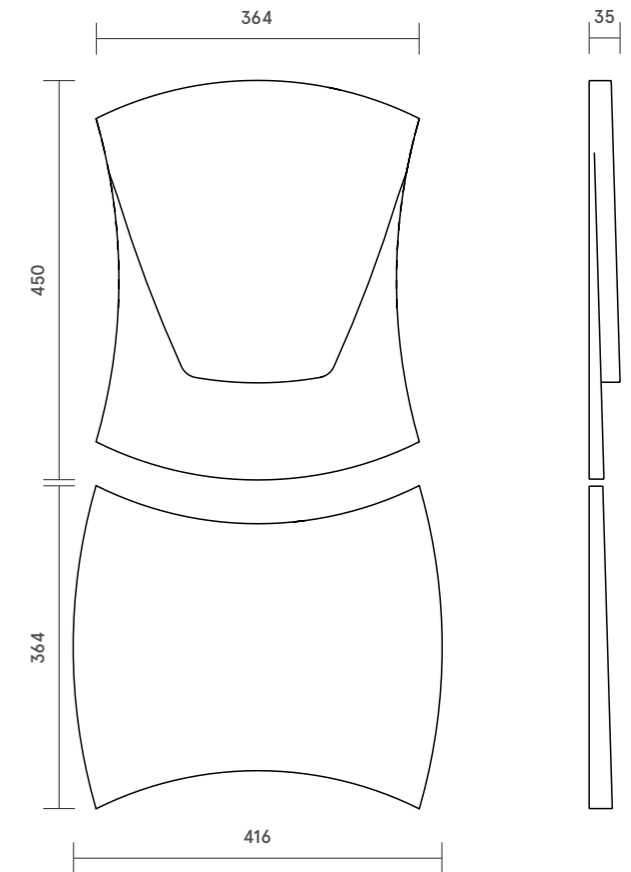
Nature has always inspired designers. Squama is the result of subtle bio mimicry of leaves. Its carefully designed in very contemporary style to add a new dimension to the walls in a living space.

Designed by
Leonardo Manavella, Argentina.



Charcoal | Travertine Texture | Squama

SQUAMA DIMENSIONS



TEXTURE



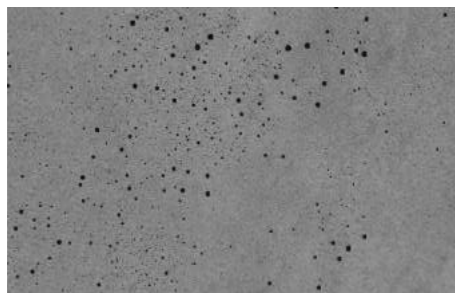
Natural Texture



Travertine Texture

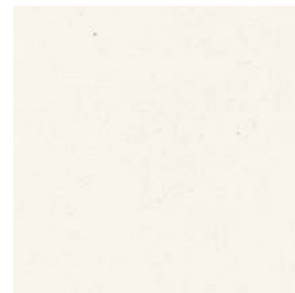


Distressed Texture



Porous Texture

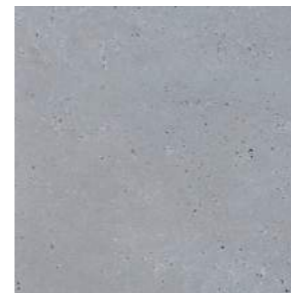
COLOUR



Earth White



Iced Steel



Melted Alloy



Charcoal



Urban Taupe



Indian Grey



Hushed Cream



Nomadic Beige



Powdered Mocha



Purple Ore



Powdered Pink



Burnt Orange



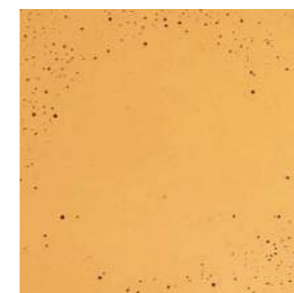
Blue Fog



Prussian Blue



Sage Green



Ochre

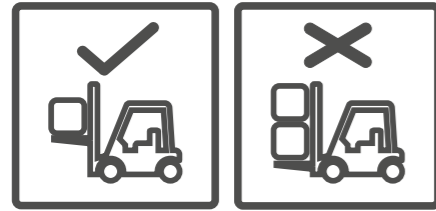
COLOUR PALETTE

Nuance Studio has 12 standardized colours that have been formulated and handpicked to exquisitely complement Litheoz. We also offer along with a '+1' option where a colour can be custom-created to closely match the customer's requirement.

Color Disclaimer :

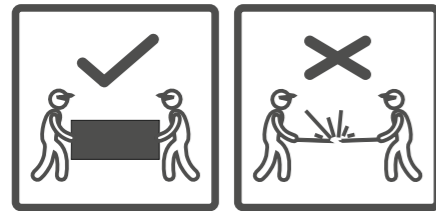
Despite every effort to accurately match each product's color when manufactured, actual colors may vary. This is a natural trait of concrete. The tonal differences complement its appearance. Color matches cannot be guaranteed.

HANDLING AND STORAGE INSTRUCTIONS



Using Fork Lift:

Use fork lift for loading and unloading the crates. Ensure that the crate is well balanced and centered to the fork of the forklift. It is not advisable to stack multiple crates while loading and unloading.



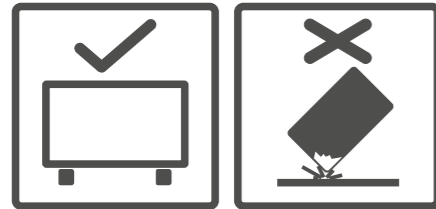
Moving Panels:

Panels/boxes should be lifted and moved vertically with the longer edge facing the ground. Lifting and moving the panels with face parallel to the ground may lead to bending and breaking of panels.



Stacking Panels:

Panels/boxes have to be stacked next to each other, perpendicular to the ground. The longer edge of the panels/boxes should face the ground. The panels should never be stacked horizontally on top of one another. This may damage the panels.



Storing Panels:

The Panels should be placed on two wooden planks on the ground as shown in the figure. The panels could be damaged if placed directly on the ground. The edges and corners of the panels/boxes should not collide with the floor of walls while handling, this may damage the panels.



Handle With Care:

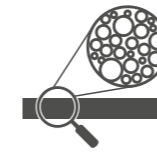
Litheoz panels need to be handled with care. Gloves must be clean, oil and grease can stain the panel surface.



Keep Dry:

Litheoz panels needs to be protected from moisture at the job-site and in long-term storage.

TECHNICAL SPECIFICATIONS



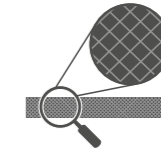
High density



Compressive strength
100 to 120Mpa



Flexural strength
12 to 15Mpa



Potential for texture



Homogeneously
colored



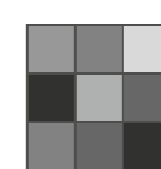
Resistant to
absorption



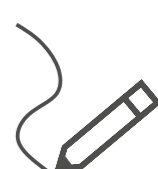
Resistant to
climatic changes



UV Resistant



Mottled tones
Colour Shade Variation
V3 Class



Potential for
custom moulding

Size:

Variation of 1% can be expected in the dimension of the Litheoz panels. For appropriate alignment of the panels during installation, use of spacers is highly advised.

Thickness:

Variation of 10% can be expected in the thickness of the Litheoz panels.

Cracks:

Visible cracks on the panels are considered as defects caused with improper handling while storing or transportation. Hairline cracks on the panels are NOT considered to be defects. They are a natural characteristic of the material and do not tamper with the functionality. These cracks which are developed over the years are minute, surficial and generally not visible to the naked eye.

Pinholes and Air Bubbles:

Concrete naturally has some air trapped in it while manufacturing. The occurrence of holes / bubbles is an inherent attribute of the material. Therefore no panels are imitable.

Smooth Natural:

The Litheoz panels with this texture is one of our most sophisticated yet earthy offerings. You can expect a few small pinholes on the surface of the panel. This is not considered a defect.

INSTALLATION PROCEDURES

Wet & Dry Wall Cladding (Using Adhesive)

Nuance Studio Concrete Wall Panels can be installed on concrete plastered walls as well dry walls such as plywood and other board partition walls.

Ensure the surface of the wall is as clean and flat as possible on which the panels are being installed. The tiling pattern should be marked on the walls before installing the panels to ensure the right tessellation pattern is achieved. Recommended wall adhesive needs to be used for installing the concrete panels. Different type of adhesives are used to install the concrete panels based on the substrate, height of installation and other factors. Please connect with us for specific details.

Wet Cladding method:

Wet Cladding method is used for installing Nuance Studio Concrete Panels on cement plastered walls. S1 class cement-based adhesives are used in this method. The back of the concrete panels should be primed with a priming liquid polymer before cladding.

Drywall Cladding method:

Drywall Cladding method is used for installing Nuance Studio Concrete Panels on substrates such as plywood and other board partitions and walls. Drywall adhesives predominantly have A&B components mixed together without using water. Drywall application is less dusty and messy by process.

For Wet Cladding and Drywall cladding, same procedure is followed from here on.

While starting installation, completely butter the back of the concrete panel with a very thin layer of adhesive. Apply the tile adhesive on the installation wall and the back of the Concrete Wall Panel using a notched trowel and install the panels as regular practice.

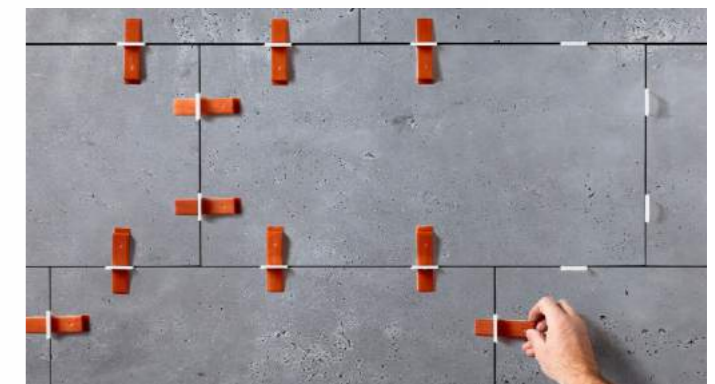
Use of spacers is recommended for installation. The spacer gaps should be filled with superior quality tile grout / sealant where the surface is subjected to moisture and water contact. The tile edges need to be masked using 1" non-marking masking tape before grouting. The marking tape needs to be removed immediately after the grout is applied. The front surface of the Concrete Panels should be kept clean and away from contact of adhesive and grout, as it may permanently stain the surface. In-case of any residue of the adhesive or grout settling on the surface of the panel, the residue should be wiped off and cleaned immediately to avoid any sorts of stains.

The spacer gaps can be left unfilled in interior application for aesthetic reasons.

Spot bonding of the adhesive is absolutely not recommended for any type of installation.

Mechanical clamps along with adhesive is recommended to be used for multilevel and exterior wall panel installations. Mechanical clamps ensure safety of the installation in higher heights and in varied climatic conditions. Please contact the company for more details.

*Nuance Studio does not warrant the compatibility of any adhesive with the Wall Panels. Compatibility is the sole responsibility of the adhesive manufacturer and/or the building owner and does not hold any responsibility to determining whether the building is capable of supporting the design load of the Wall system, including the Wall Panels.



nuance
STUDIO

www.thenuancestudio.com
info@thenuancestudio.com

