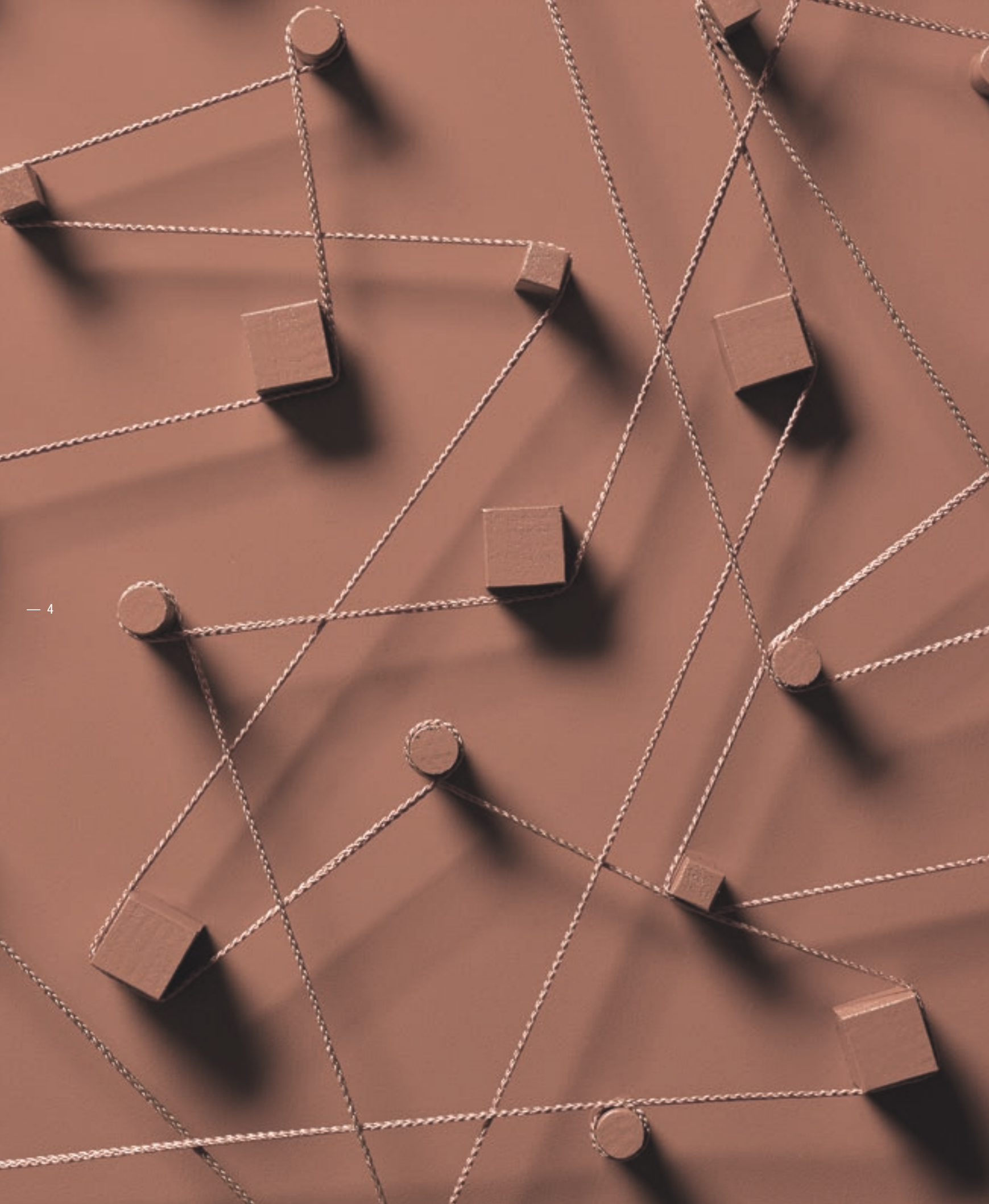


FONDOVALLE

**RES
ART**



DEEPLY CRAFTED



RES ART

PORCELAIN STONEWARE SLABS / TILES 160X320 120X278 160X160 120X120 60X120 80X80 40X80

NEW, EXPERIMENTAL FUSIONS OF ART AND TECHNOLOGY

Nuove sperimentazioni tra arte e tecnologia | De nouvelles expérimentations entre art et technologie | Neue Versuche zwischen Kunst und Technologie | Экспериментирование с искусством и технологией по-новому

Superfici in divenire sospese tra realtà e immaginazione, intrise di manualità e artigianalità, ricche di tecnica ed esperienza, si estendono attraverso nuove texture, colori e dimensioni. Res Art interpreta gli originali effetti materici della resina spatolata e lavorata a mano per trasferirli su lastre in gres porcellanato di grande formato. L'intensità e il calore di una materia semplice ma ricca di suggestioni artistiche si concretizza in nuove soluzioni a pavimento e rivestimento, per progetti integrati di grande forza espressiva.

Suspended between reality and imagination, these budding collections - imbued with manual excellence and craftsmanship, rich in technique and experience - gradually grow with the introduction of new textures, colours, and sizes. Res Art recreates all the original texture effects of trowel-applied, hand-worked resin and transfers them to large porcelain stoneware slabs. The intensity and warmth of a simple, yet artistically rich, material is captured to perfect effect in these new floor and wall solutions for high-impact, all-encompassing designs.

Des surfaces en évolution suspendues entre la réalité et l'imagination, imprégnées de manualité et d'artisanalité, riches en technique et en expérience, s'étendent à travers de nouvelles textures, teintes et dimensions. Res Art interprète les effets matérialistes originaux de la résine appliquée à la spatule, et travaillée à la main pour les transférer sur des dalles en grès cérame dans grand format.

L'intensité et la chaleur d'une matière simple riche en suggestions artistiques se concrétisent à travers de nouvelles solutions pour les sols et les murs, dans le cadre de projets intégrés d'une grande force d'expression.

Entstehende Oberflächen, schwebend zwischen Realität und Vorstellung, geprägt von Handarbeit und Handwerk, reich an Technik und Erfahrung, erstrecken sich durch neue Texturen, Farben und Abmessungen. Res Art interpretiert die originellen materiellen Effekte des gespachtelten und von Hand bearbeiteten Harzes, um sie auf Platten aus Feinsteinzeug im Großformat. Die Intensität und die Farbe einer einfachen aber an künstlerischen Eindrücken reichen Materie konkretisiert sich in neuen Lösungen für Boden- und Wandbeläge, für Projekte mit einer großen Ausdruckskraft.

Эти поверхности, парящие между реальностью и воображением, пропитаны мастерством и ремесленным характером, богатым техническим содержанием и опытом, благодаря чему они приобретают новые текстуры, цвета и размеры. Res Art интерпретирует оригинальные фактурные эффекты смолы, обработанной вручную шпателем, и воссоздает их на керамогранитных плитках. Выразительность и тепло простого материала, богатого художественным очарованием, воплощается в новые напольные и настенные решения, при помощи которых можно создать интегрированные проекты с большой выразительной силой.

RES ART

PORCELAIN STONEWARE SLABS / TILES 160X320 120X278 160X160 120X120 60X120 80X80 40X80

SOLID SHADES THAT REDEFINE THE SHAPES OF LIVING SPACES

Colori densi ridisegnano i contorni dell'abitare | Des couleurs denses redessinent les contours du mode de vie | Kräftige Farben zeichnen die Konturen des Wohnens | Насыщенные цвета переоформляют жилье

Protagoniste delle nuove tendenze, le tonalità di Res Art sono immerse nella profondità di una texture a rilievo patinata e piacevole al tatto. Una mirabile interpretazione della resina nella sua estetica più pura, a tratti quasi cerata, grazie agli effetti di rifrazione della luce, disegna ambienti minimali e ricercati allo stesso tempo.

La collezione si compone di una gamma di colori neutri, con accenti caldi e tonalità verdi/azzurre, pensata per dialogare con una ricca varietà di superfici in abbinamento, per costruire spazi di naturale bellezza trasversali a ogni stile.

Shining stars of the latest trends, the Res Art shades lend depth through a highly textured material with a waxy finish that cries out to be touched. A beautiful recreation of resin in its purest form. With light bouncing off the material creating an almost wax-like finish, this line lends designs a minimal yet sophisticated tone.

The collection, which features a subtle colour palette with warm accents and green and blue tones, is designed to work with a vast assortment of offerings to create naturally beautiful spaces that go hand in hand with any style.

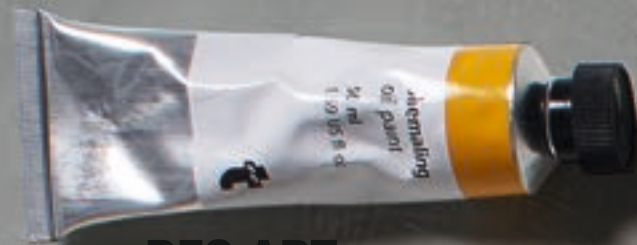
Protagonistes des nouvelles tendances, les tonalités de Res Art sont immergées dans la profondeur d'une texture en relief patinée et agréable au toucher. Une interprétation admirable de la résine dans son esthétique la plus pure, parfois presque cirée, grâce aux effets de la réfraction de la lumière, dessine des espaces à la fois minimaux et raffinés. La collection est composée d'une gamme de couleurs neutres,

aux accents chauds et aux nuances vertes/bleu clair, conçue pour dialoguer avec une riche variété de surfaces assorties, pour construire des espaces d'une beauté naturelle transversaux à chaque style.

Als Protagonisten der neuen Trends sind die Farbtöne von Res Art in die Tiefe einer Textur mit patiniertem Relief eingetaucht, das sich angenehm anfühlt. Eine wunderbare Interpretation des Harzes in seiner reinsten Form, dank der Effekte der manchmal beinahe wachsartigen Lichtbrechung, die minimale und gleichzeitig auserlesene Umgebungen zeichnet. Die Kollektion umfasst eine neutrale Farbpalette mit warmen Akzenten sowie Grün-/Blautönen, die für den Dialog mit einer breiten Vielfalt passender Oberflächen konzipiert wurden, um Räume von natürlicher Schönheit zu schaffen, die sich für jeden Stil eignen.

Идя в ногу с новыми тенденциями, расцветки Res Art утопают в глубине рельефной, патинированной текстуры, приятной на ощупь. Это восхитительное воспроизведение смолы в ее самом чистом виде, приобретающее почти восковой вид благодаря эффектам преломления света, создает минималистские и в то же время изысканные интерьеры. Коллекция предлагает палитру в нейтральных цветах с теплыми тонами и сине-зелеными оттенками, задуманную для сочетания с широким ассортиментом поверхностей, при помощи которых можно оформлять красивые, натуральные пространства, удачно подходящие под любой стиль.





RES ART
MATCHING COLOURS AND SURFACES



11



01

12

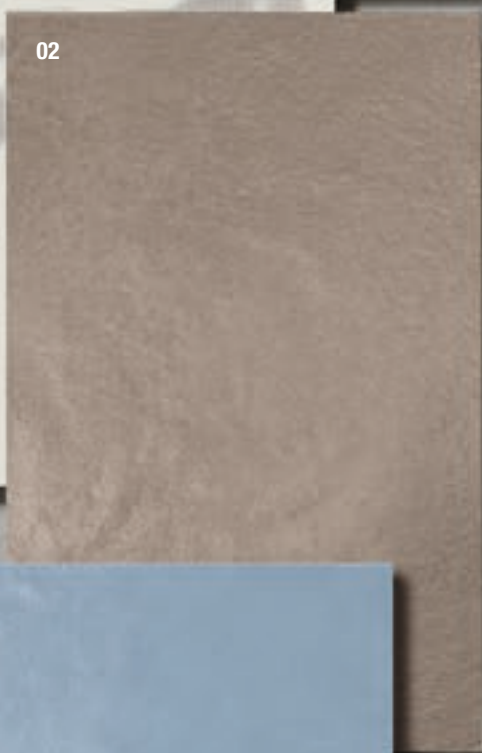


04

05



10



02



03



06



08

- 01_Res Art Talc
- 02_Res Art Mud
- 03_Res Art Lava
- 04_Res Art Ash
- 05_Res Art Cobalt
- 06_Res Art Pottery
- 07_Res Art Powder
- 08_Res Art Olive
- 09_Res Art Avio
- 10_Dream Light Side
- 11_Komi Pure
- 12_Dream Jungle



09



07



8

9

RES ART OLIVE

FORM MEETS MATTER TO CASUAL EFFECT

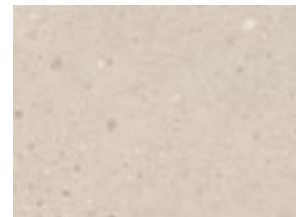
Incontri di forme e materia dal design disinvolto
Des rencontres de formes et de matières avec un design désinvolte
Begegnung zwischen Formen und Materie mit einem zwanglosen Design
Сочетание разных форм и материалов с непринужденным дизайном



Listello Res Art Olive 5x30 . 1,97"x11,81"
Keynote Amber 60x120 . 23,62"x47,24"



RES ART
Olive



KEYNOTE
Amber



RES ART AVIO

ECLECTIC PERSPECTIVES

Visioni d'insieme dal segno eclettico
Visions d'ensemble au signe éclectique
Ansichten eklektischer Art
Общий вид с эклектичным духом



Res Art Avio 160x320 . 62,99"x125,98"
Listello Res Art Avio 5x30 . 1,97"x11,81"
Keynote Cool Grey 80x80 . 31,50"x31,50"

RES ART POTTERY

CONTEMPORARY BACKGROUND TILES FOR CREATIVE SOLUTIONS

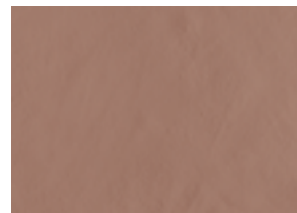
Sfondi contemporanei per soluzioni creative
Des fonds contemporains pour des solutions créatives
Moderne Hintergründe für kreative Lösungen
Современные фоны для творческих решений



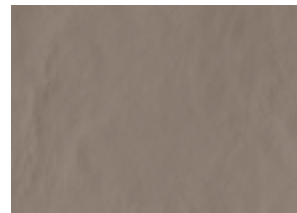
Res Art Pottery 160x320 . 62,99"x125,98"
Res Art Mud 160x320 . 62,99"x125,98"
Res Art Lava 160x320 . 62,99"x125,98"



Res Art Pottery 160x320 . 62,99"x125,98"
Res Art Mud 160x320 . 62,99"x125,98"
Res Art Lava 160x320 . 62,99"x125,98"



RES ART
Pottery



RES ART
Mud



RES ART
Lava





Res Art Pottery 120x278 . 47,24"x109,45"
 Res Art Mosaico Ball Pottery 28,8x31,2 . 11,34"x12,28"
 Shards Small White 120x120 . 47,24"x47,24"

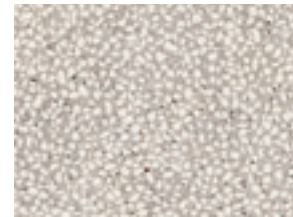




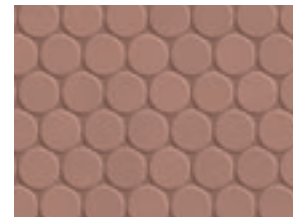
Res Art Mosaico Ball Pottery 28,6x31,2 . 11,34"x12,28"



RES ART
Pottery



SHARDS
Small White



RES ART
Mosaico Ball Pottery



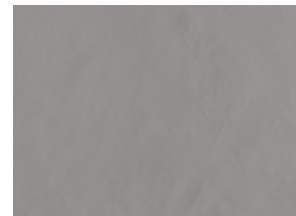
RES ART POWDER

EXPANSES OF MATERIAL, ENDLESS SENSATIONS

Ampiezza di superfici, pienezza di emozioni
L'amplitude de surfaces, une plénitude d'émotions
Größe der Oberflächen, Fülle der Emotionen
Простор поверхностей, полнота эмоций



Res Art Powder 160x320 . 62,99"x125,98"
Komi Natural 40x240 . 15,75"x94,49"



RES ART
Powder



KOMI
Natural



Res Art Powder 160x320 . 62,99"x125,98"
Komi Natural 40x240 . 15,75"x94,49"

RES ART ASH

NATURAL BEAUTY, PAIRED WITH TEXTURE, LIGHT, AND DESIGN

Suggestioni naturali e tattili, di luce e design
Des suggestions naturelles et tactiles, de lumière et de design
Natürliche und spürbare Eindrücke, von Licht und Design
Натуральные и осязательные ощущения, созданные светом и дизайном



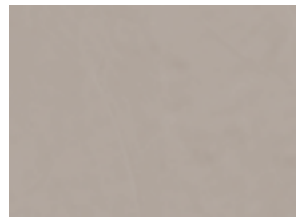
Res Art Ash 160x320 . 62,99"x125,98"



Res Art Ash 160x320 . 62,99"x125,98"
Res Art Ash 160x160 . 62,99"x62,99"
Dream Jungle 120x278 . 47,24"x109,45"



DREAM
Jungle



RES ART
Ash



RES ART COBALT

SUBTLE CONTRASTS OF TEXTURES AND SHADES

Contrasti morbidi tra materia e colore
Des contrastes doux entre matière et couleur
Weiche Kontraste zwischen Materie und Farbe
Мягкий контраст материи и цвета

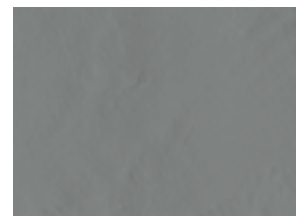


Res Art Cobalt 160x320 . 62,99"x125,98"
Komi Pure 24x120 . 9,45"x47,24" - 24x240 . 9,45"x94,49"





38



RES ART
Cobalt



KOMI
Pure



39

Res Art Cobalt 160x320 . 62,99"x125,98"
Komi Pure 24x120 . 9,45"x47,24" - 24x240 . 9,45"x94,49"

RES ART LAVA / TALC

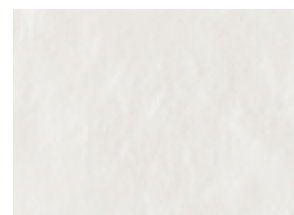
ADVANCED MATERIALS FOR ELEGANT SPACES

Superfici evolute per spazi raffinati
Des surfaces évoluées pour des espaces raffinés
Entwickelte Oberfläche für raffinierte Räume
Передовые материалы для изысканных пространств



Res Art Lava 160x320 . 62,99"x125,98"
Res Art Talc 160x160 . 62,99"x62,99"





RES ART
Talc



RES ART
Lava



RES ART MUD

THE VARIEGATED BEAUTY OF AN EXQUISITE INTERWEAVING OF INFLUENCES

La bellezza variegata di un intreccio magico
La beauté diversifiée d'un enchevêtrement magique
Die abwechslungsreiche Schönheit eines magischen Geflechts
Многогранная красота волшебного переплетения



Res Art Mud 160x160 . 62,99"x62,99"
Dream Light Side 120x278 . 47,24"x109,45"



RES ART

Lastre / piastrelle di ceramica in gres porcellanato - Gruppo Bla UGL
 Porcelain stoneware slabs / tiles - Gruppe Bla UGL
 Dalles / carreaux en céramique en grès céram - Group Bla UGL
 Keramikplatten / keramikfliesen aus Feinsteinzeug - Groupe Bla UGL
 Керамические пластины / Керамическая плитка из керамогранита - Группа Bla UGL

THICKNESS



6,5 mm
 SELF LEVELING 10 mm

SURFACES

Naturale Rettificato
 Natural Rectified
 Naturel Rectifi
 Natural Rektifiziert
 Натуральный Ректифицированный

TECH INFO



BS 7976-2
 AS 4586
 UNE-ENV 12633

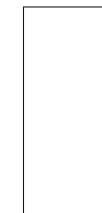
6,5 mm 10 mm

Materiali ceramici prodotti con differenti tecnologie, con risultati estetici differenziati che non consentono la miscelazione tra i diversi spessori | Ceramics manufactured using a range of technologies, with different effects, which do not allow materials with different thicknesses to be used together

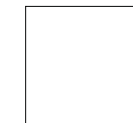
SIZES



160x320*
 62,99"x125,98"



120x278**
 47,24"x109,45"



160x160
 62,99"x62,99"



120x120
 47,24"x47,24"



60x120
 23,62"x47,24"



80x80
 31,50"x31,50"



40x80
 15,75"x31,50"

* Lastre realizzate attraverso impasti tecnici colorati con colori dedicati | Slabs produced using coloured body mix with technical features available in dedicated shades

** Lastre realizzate attraverso impasti colorati con colori standard | Slabs produced using coloured body mix available in standard shades

COLORS



Talc

Ash

Powder

Mud

Lava

Olive

Avio

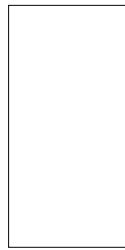
Pottery

Cobalt

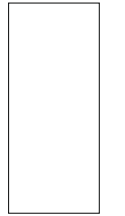


Talc

SIZES & SURFACES



160x320*
62,99"x125,98"



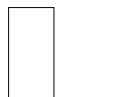
120x278**
47,24"x109,45"



160x160
62,99"x62,99"



120x120
47,24"x47,24"



60x120
23,62"x47,24"



80x80
31,50"x31,50"



40x80
15,75"x31,50"

Naturale Rettificato
Natural Rectified
Naturel Rectifi
Natural Rektifiziert
Натуральный Ректифицированный

6,5 mm

160x320 . 62,99"x125,98"
RES023

120x278 . 47,24"x109,45"
RES217

160x160 . 62,99"x62,99"
RES066

120x120 . 47,24"x47,24"
RES178

60x120 . 23,62"x47,24"
RES192

10 mm

80x80 . 31,50"x31,50"
RES006

40x80 . 15,75"x31,50"
RES011

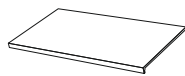
6,5 mm
5x30 . 1,97"x11,81"
listello
RES259

10 mm
5x30 . 1,97"x11,81"
listello
RES268



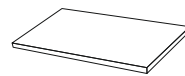
6,5 mm
8x120 . 3,15"x47,24"
battiscopa
RES199

10 mm
8x80 . 3,15"x31,50"
battiscopa
RES092



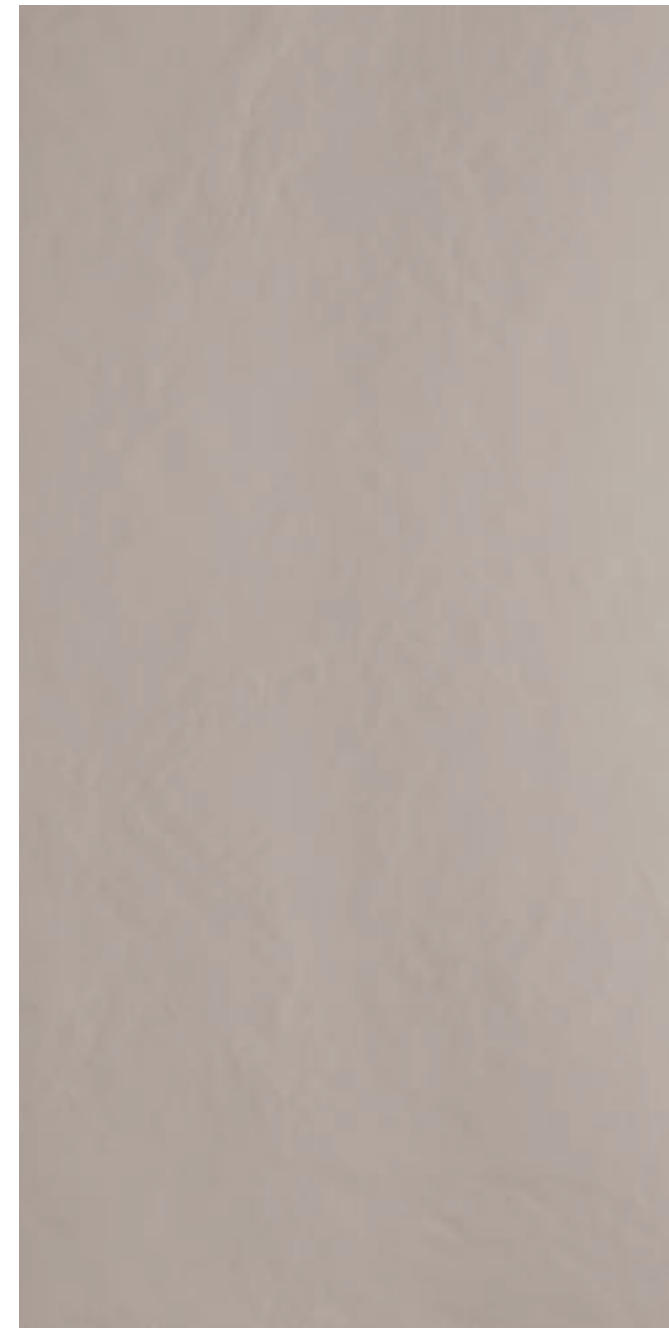
6,5 mm
33x120x5 . 12,99"x47,24"x1,97"
gradino lineare LL
RES078

10 mm
40x80x5 . 15,75"x31,50"x1,97"
gradino lineare M
RES097



6,5 mm
33x120x5 . 12,99"x47,24"x1,97"
gradino angolare LL
RES085

10 mm
40x80x5 . 15,75"x31,50"x1,97"
gradino angolare M
RES102



Ash

SIZES & SURFACES



160x320*
62,99"x125,98"



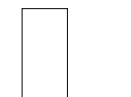
120x278**
47,24"x109,45"



160x160
62,99"x62,99"



120x120
47,24"x47,24"



60x120
23,62"x47,24"



80x80
31,50"x31,50"



40x80
15,75"x31,50"

Naturale Rettificato
Natural Rectified
Naturel Rectifi
Natural Rektifiziert
Натуральный Ректифицированный

6,5 mm

160x320 . 62,99"x125,98"
RES024

120x278 . 47,24"x109,45"
RES218

160x160 . 62,99"x62,99"
RES067

120x120 . 47,24"x47,24"
RES179

60x120 . 23,62"x47,24"
RES193

10 mm

80x80 . 31,50"x31,50"
RES007

40x80 . 15,75"x31,50"
RES012

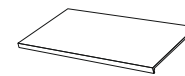
6,5 mm
5x30 . 1,97"x11,81"
listello
RES260

10 mm
5x30 . 1,97"x11,81"
listello
RES269



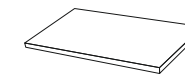
6,5 mm
8x120 . 3,15"x47,24"
battiscopa
RES200

10 mm
8x80 . 3,15"x31,50"
battiscopa
RES093



6,5 mm
33x120x5 . 12,99"x47,24"x1,97"
gradino lineare LL
RES079

10 mm
40x80x5 . 15,75"x31,50"x1,97"
gradino lineare M
RES098



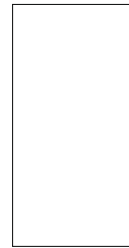
6,5 mm
33x120x5 . 12,99"x47,24"x1,97"
gradino angolare LL
RES086

10 mm
40x80x5 . 15,75"x31,50"x1,97"
gradino angolare M
RES103

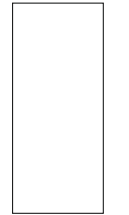


Powder

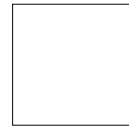
SIZES & SURFACES



160x320*
62,99"x125,98"



120x278**
47,24"x109,45"



160x160
62,99"x62,99"



120x120
47,24"x47,24"



60x120
23,62"x47,24"



80x80
31,50"x31,50"



40x80
15,75"x31,50"

Naturale Rettificato
Natural Rectified
Naturel Rectifié
Natural Rektifiziert
Натуральный Ректифицированный

6,5 mm

160x320 . 62,99"x125,98"
RES025

120x278 . 47,24"x109,45"
RES219

160x160 . 62,99"x62,99"
RES068

120x120 . 47,24"x47,24"
RES180

60x120 . 23,62"x47,24"
RES194

10 mm

80x80 . 31,50"x31,50"
RES008

40x80 . 15,75"x31,50"
RES013

6,5 mm

5x30 . 1,97"x11,81"
listello

RES261

10 mm

5x30 . 1,97"x11,81"
listello

RES270

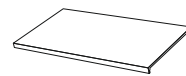


6,5 mm
8x120 . 3,15"x47,24"
battiscopa

RES201

10 mm
8x80 . 3,15"x31,50"
battiscopa

RES094

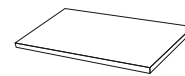


6,5 mm
33x120x5 . 12,99"x47,24"x1,97"
gradino lineare LL

RES080

10 mm
40x80x5 . 15,75"x31,50"x1,97"
gradino lineare M

RES099



6,5 mm
33x120x5 . 12,99"x47,24"x1,97"
gradino angolare LL

RES087

10 mm
40x80x5 . 15,75"x31,50"x1,97"
gradino angolare M

RES104



Mud

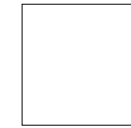
SIZES & SURFACES



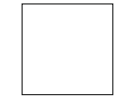
160x320*
62,99"x125,98"



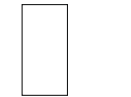
120x278**
47,24"x109,45"



160x160
62,99"x62,99"



120x120
47,24"x47,24"



60x120
23,62"x47,24"



80x80
31,50"x31,50"



40x80
15,75"x31,50"

Naturale Rettificato
Natural Rectified
Naturel Rectifié
Natural Rektifiziert
Натуральный Ректифицированный

6,5 mm

160x320 . 62,99"x125,98"
RES026

120x278 . 47,24"x109,45"
RES220

160x160 . 62,99"x62,99"
RES069

120x120 . 47,24"x47,24"
RES181

60x120 . 23,62"x47,24"
RES195

10 mm

80x80 . 31,50"x31,50"
RES009

40x80 . 15,75"x31,50"
RES014

6,5 mm

5x30 . 1,97"x11,81"
listello

RES262

10 mm

5x30 . 1,97"x11,81"
listello

RES271

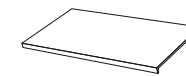


6,5 mm
8x120 . 3,15"x47,24"
battiscopa

RES202

10 mm
8x80 . 3,15"x31,50"
battiscopa

RES095

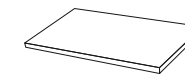


6,5 mm
33x120x5 . 12,99"x47,24"x1,97"
gradino lineare LL

RES081

10 mm
40x80x5 . 15,75"x31,50"x1,97"
gradino lineare M

RES100

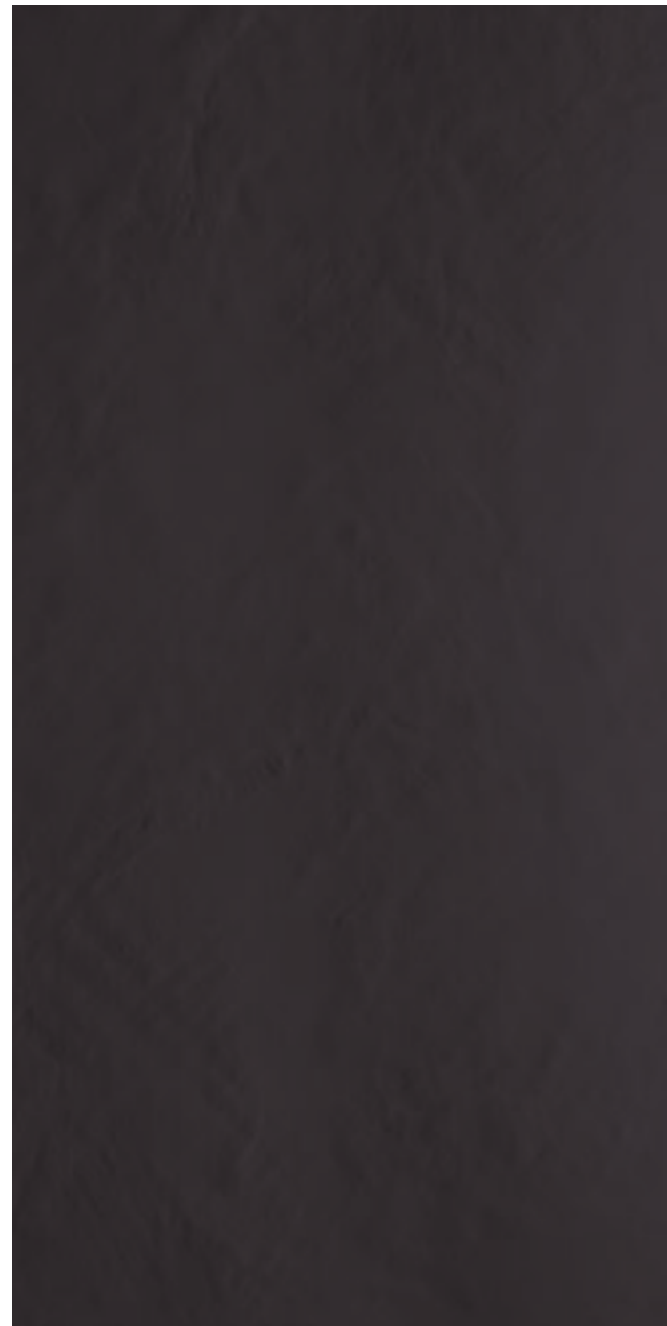


6,5 mm
33x120x5 . 12,99"x47,24"x1,97"
gradino angolare LL

RES088

10 mm
40x80x5 . 15,75"x31,50"x1,97"
gradino angolare M

RES105

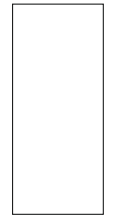


Lava

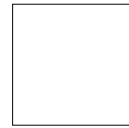
SIZES & SURFACES



160x320*
62,99"x125,98"



120x278**
47,24"x109,45"



160x160
62,99"x62,99"



120x120
47,24"x47,24"



60x120
23,62"x47,24"



80x80
31,50"x31,50"



40x80
15,75"x31,50"

Naturale Rettificato
Natural Rectified
Naturel Rectifi
Natural Rektifiziert
Натуральный Ректифицированный

6,5 mm

160x320 . 62,99"x125,98"
RES027

120x278 . 47,24"x109,45"
RES221

160x160 . 62,99"x62,99"
RES070

120x120 . 47,24"x47,24"
RES182

60x120 . 23,62"x47,24"
RES196

10 mm

80x80 . 31,50"x31,50"
RES010

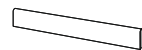
40x80 . 15,75"x31,50"
RES015

6,5 mm
5x30 . 1,97"x11,81"
listello

RES263

10 mm
5x30 . 1,97"x11,81"
listello

RES272

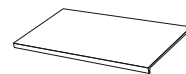


6,5 mm
8x120 . 3,15"x47,24"
battiscopa

RES203

10 mm
8x80 . 3,15"x31,50"
battiscopa

RES096

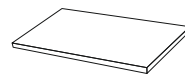


6,5 mm
33x120x5 . 12,99"x47,24"x1,97"
gradino lineare LL

RES082

10 mm
40x80x5 . 15,75"x31,50"x1,97"
gradino lineare M

RES101



6,5 mm
33x120x5 . 12,99"x47,24"x1,97"
gradino angolare LL

RES089

10 mm
40x80x5 . 15,75"x31,50"x1,97"
gradino angolare M

RES106

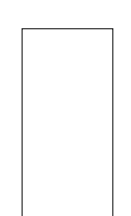


Olive

SIZES & SURFACES



160x320*
62,99"x125,98"



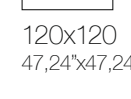
120x278**
47,24"x109,45"



160x160
62,99"x62,99"



120x120
47,24"x47,24"



60x120
23,62"x47,24"



60x120
23,62"x47,24"

Naturale Rettificato
Natural Rectified
Naturel Rectifi
Natural Rektifiziert
Натуральный Ректифицированный

6,5 mm

160x320 . 62,99"x125,98"
RES242

120x278 . 47,24"x109,45"
RES238

160x160 . 62,99"x62,99"
RES246

120x120 . 47,24"x47,24"
RES232

60x120 . 23,62"x47,24"
RES234

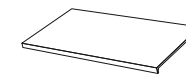
6,5 mm
5x30 . 1,97"x11,81"
listello

RES266



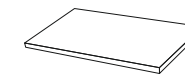
6,5 mm
8x120 . 3,15"x47,24"
battiscopa

RES248



6,5 mm
33x120x5 . 12,99"x47,24"x1,97"
gradino lineare LL

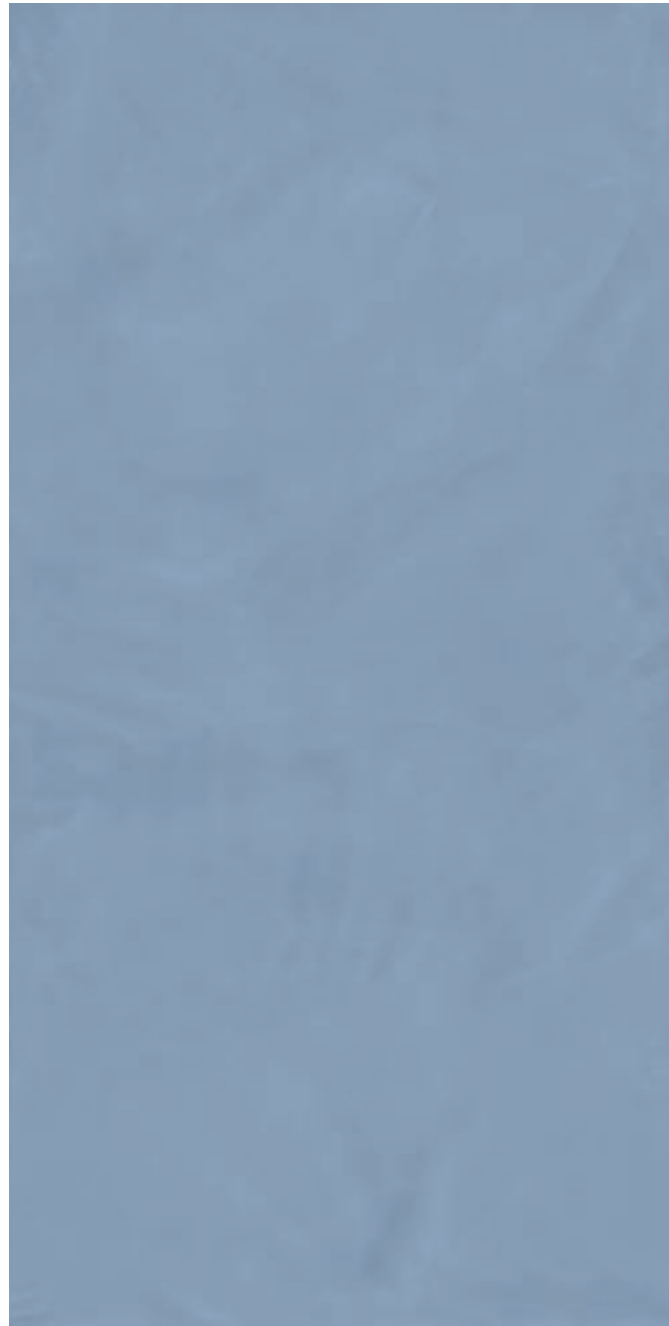
RES250



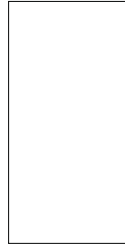
6,5 mm
33x120x5 . 12,99"x47,24"x1,97"
gradino angolare LL

RES252

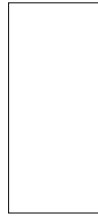
RES ART



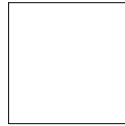
SIZES & SURFACES



160x320*
62,99"x125,98"



120x278**
47,24"x109,45"



160x160
62,99"x62,99"



120x120
47,24"x47,24"



60x120
23,62"x47,24"

Naturale Rettificato
Natural Rectified
Naturel Rectifié
Natural Rektifiziert
Натуральный Ректифицированный

6,5 mm

160x320 . 62,99"x125,98"
RES243

120x278 . 47,24"x109,45"
RES239

160x160 . 62,99"x62,99"
RES247

120x120 . 47,24"x47,24"
RES233

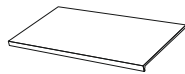
60x120 . 23,62"x47,24"
RES235

6,5 mm
5x30 . 1,97"x11,81"
listello
RES267

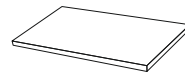
Avio



6,5 mm
8x120 . 3,15"x47,24"
battiscopa
RES249



6,5 mm
33x120x5 . 12,99"x47,24"x1,97"
gradino lineare LL
RES251



6,5 mm
33x120x5 . 12,99"x47,24"x1,97"
gradino angolare LL
RES253



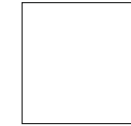
SIZES & SURFACES



160x320*
62,99"x125,98"



120x278**
47,24"x109,45"



160x160
62,99"x62,99"



120x120
47,24"x47,24"



60x120
23,62"x47,24"

Naturale Rettificato
Natural Rectified
Naturel Rectifié
Natural Rektifiziert
Натуральный Ректифицированный

6,5 mm

160x320 . 62,99"x125,98"
RES028

120x278 . 47,24"x109,45"
RES222

160x160 . 62,99"x62,99"
RES128

120x120 . 47,24"x47,24"
RES183

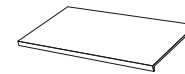
60x120 . 23,62"x47,24"
RES197

6,5 mm
5x30 . 1,97"x11,81"
listello
RES264

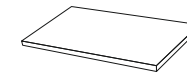
Pottery



6,5 mm
8x120 . 3,15"x47,24"
battiscopa
RES204

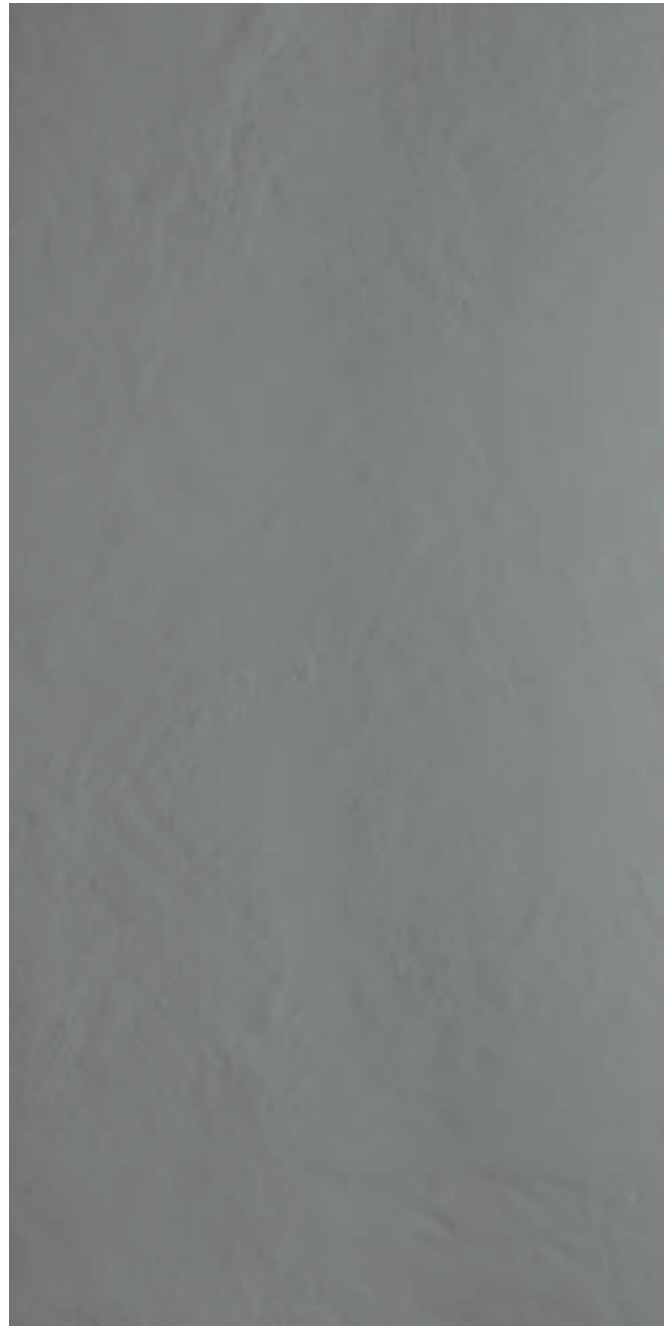


6,5 mm
33x120x5 . 12,99"x47,24"x1,97"
gradino lineare LL
RES206



6,5 mm
33x120x5 . 12,99"x47,24"x1,97"
gradino angolare LL
RES207

RES ART

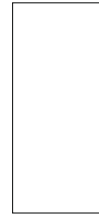


Cobalt

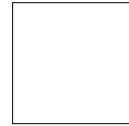
SIZES & SURFACES



160x320*
62,99"x125,98"



120x278**
47,24"x109,45"



160x160
62,99"x62,99"



120x120
47,24"x47,24"



60x120
23,62"x47,24"

Naturale Rettificato
Natural Rectified
Naturel Rectifié
Natural Rektifiziert
Натуральный Ректифицированный

6,5 mm

160x320 . 62,99"x125,98"
RES029

120x278 . 47,24"x109,45"
RES223

160x160 . 62,99"x62,99"
RES129

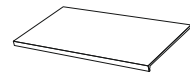
120x120 . 47,24"x47,24"
RES184

60x120 . 23,62"x47,24"
RES198

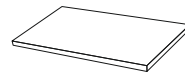
6,5 mm
5x30 . 1,97"x11,81"
listello
RES265



6,5 mm
8x120 . 3,15"x47,24"
battiscopa
RES205



6,5 mm
33x120x5 . 12,99"x47,24"x1,97"
gradino lineare LL
RES208

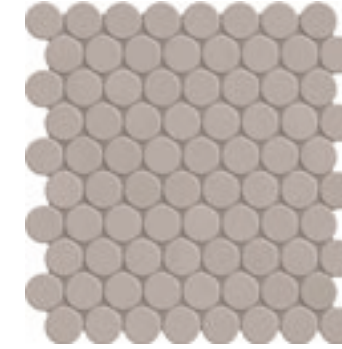


6,5 mm
33x120x5 . 12,99"x47,24"x1,97"
gradino angolare LL
RES209

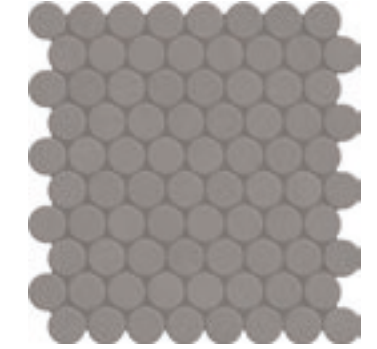
MOSAICO BALL



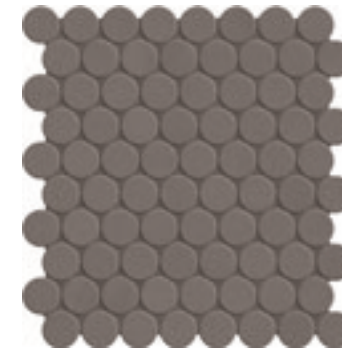
Talc
6,5 mm
28,8x31,2 . 11,34"x12,28"
RES171



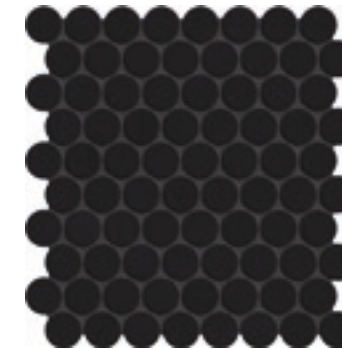
Ash
6,5 mm
28,8x31,2 . 11,34"x12,28"
RES172



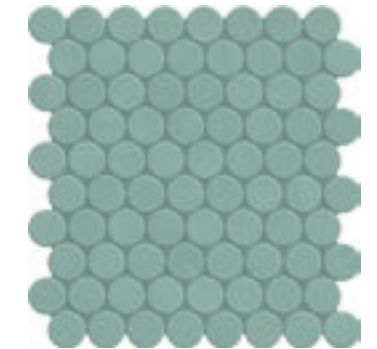
Powder
6,5 mm
28,8x31,2 . 11,34"x12,28"
RES173



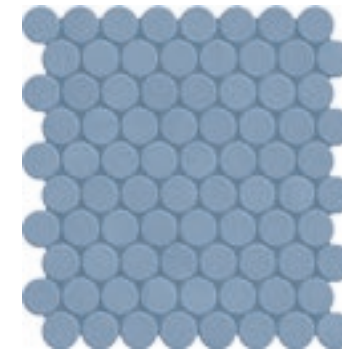
Mud
6,5 mm
28,8x31,2 . 11,34"x12,28"
RES174



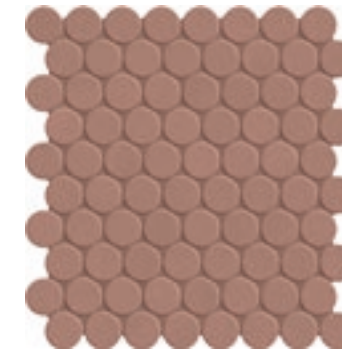
Lava
6,5 mm
28,8x31,2 . 11,34"x12,28"
RES175



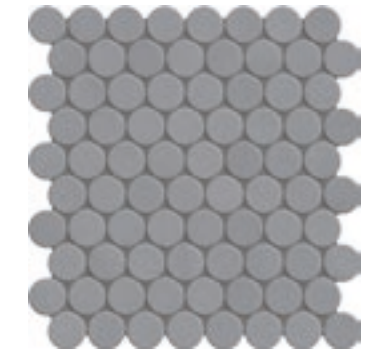
Olive
6,5 mm
28,8x31,2 . 11,34"x12,28"
RES254



Avio
6,5 mm
28,8x31,2 . 11,34"x12,28"
RES255



Pottery
6,5 mm
28,8x31,2 . 11,34"x12,28"
RES176



Cobalt
6,5 mm
28,8x31,2 . 11,34"x12,28"
RES177

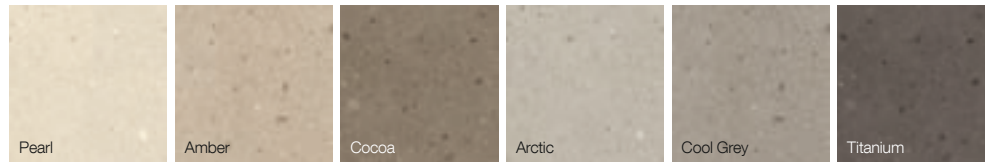
RES ART

LISTELLO

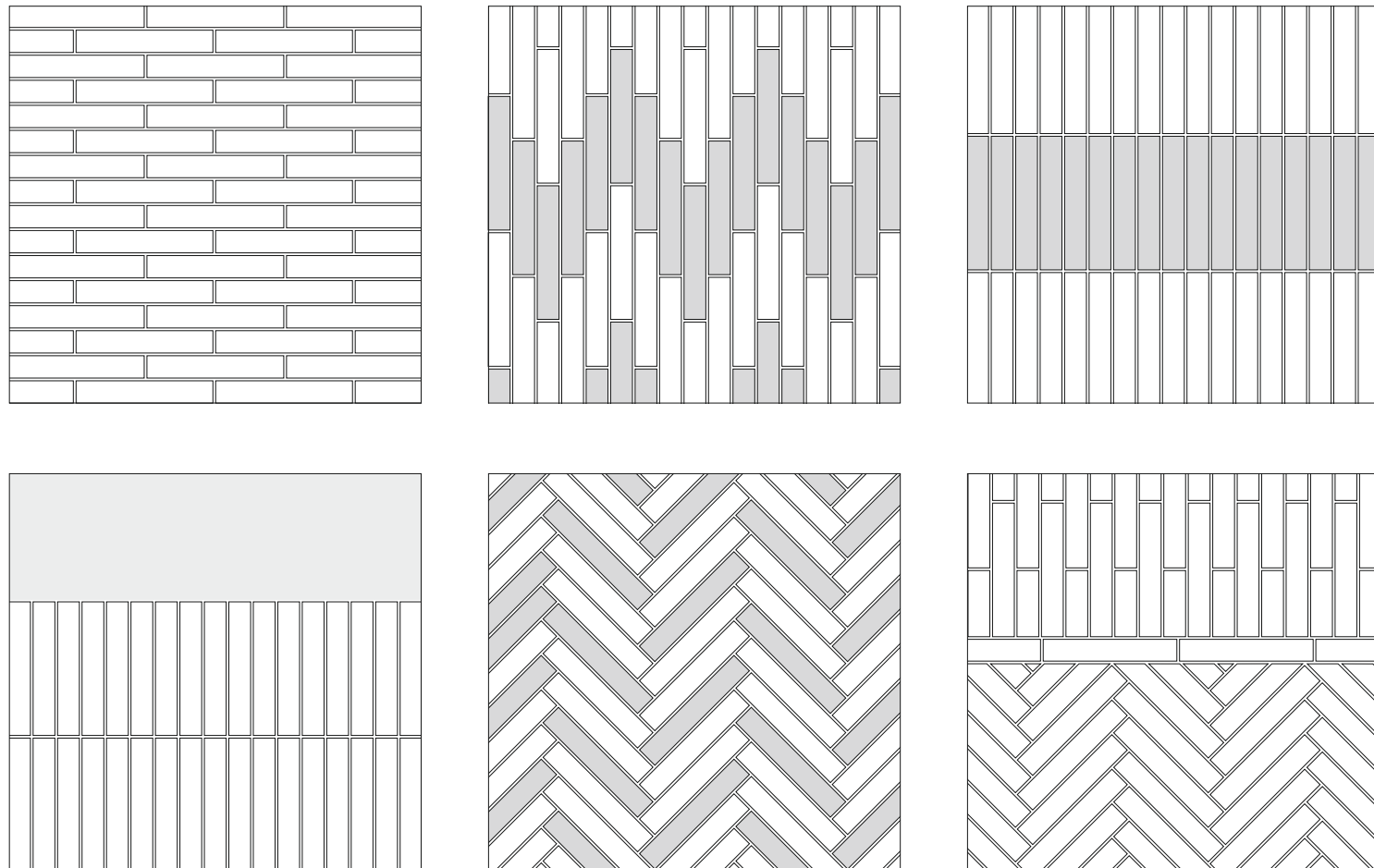
Il listello Res Art si abbina armoniosamente con le superfici Keynote attraverso l'accostamento di colori differenti delle 2 collezioni secondo schemi di posa variabili. | The Res Art strips pair perfectly with Keynote, with the different colours from the two collections put together in a variety of arrangements to stunning effect. | Le listel Rex Art se combine harmonieusement avec les surfaces Keynote grâce à la combinaison de différentes couleurs des 2 collections selon des schémas de pose variables. | Die Leiste Res Art passt durch die Kombination mit verschiedenen Farben der 2 Kollektionen entsprechend der variablen Verlegemuster auf harmonische Weise zu den Oberflächen Keynote. | Бордюры Res Art гармонично сочетаются с плиткой из коллекции Keynote, если использовать разные цвета этих 2 коллекций и разнообразные схемы укладки.

Abbinamenti consigliati | Suggested mix and match | Assortiments conseillés | Empfohlene Kombinationen | Рекомендуемые сочетания

KEYNOTE COLORS



Alcuni suggerimenti di posa | Laying suggestions | Quelques conseils de pose | Einige Empfehlungen zur Verlegung | Некоторые рекомендации по укладке



IMBALLI

Packages | Emballages | Verpackungen | Упаковка

M ² SQM	pcs. x 	m ² x	kg x	x	m ² x	kg x	m ² x pcs.	kg x m ²	kg cassa kg box	kg total total kg	dimensione esterna cassa crate overall dimensions
Thickness 6,5 mm											
160x320	1	5,12	80,00	14	71,68	1120,00	5,12	15,50	130	1250,00	344,6x174,6x40,4 cm
120x278	1	3,33	51,61	18	59,94	929,00	3,33	15,50	101	929,00	132x291x31,5 cm
160x160	1	2,55	40,00	20	51,00	795,00	2,55	15,58	83	878,00	179,6x177,2x36,3 cm
120x120	2	2,88	44,64	20	57,60	892,80	1,44	15,50	37	929,80	131,2x131,2x56,2 cm
60x120	2	1,44	22,32	40	57,60	892,80	0,72	15,50	20	912,80	80x122x74 cm with lateral side
31,2x28,8 Mosaico Ball	6	0,54	-	-	-	-	-	-	-	-	-
5x30 listello	33	0,495	8,00	-	-	-	-	-	-	-	-
Thickness 10 mm											
80x80	2	1,28	27,94	40	51,20	1118,00	-	-	-	-	-
40x80	4	1,28	27,94	48	61,44	1341,00	-	-	-	-	-
5x30 listello	33	0,495	11,00	-	-	-	-	-	-	-	-
PZ PCS											
Thickness 6,5 mm											
8x120 battiscopa	7	-	10,50	-	-	-	-	-	-	-	-
33x120x5 gradino lineare LL	2	-	15,00	-	-	-	-	-	-	-	-
33x120x5 gradino angolare LL	1	-	7,50	-	-	-	-	-	-	-	-
Thickness 10 mm											
8x80 battiscopa	6	-	9,60	-	-	-	-	-	-	-	-
40x80x5 gradino lineare M	2	-	15,00	-	-	-	-	-	-	-	-
40x80x5 gradino angolare M	1	-	7,50	-	-	-	-	-	-	-	-

CARATTERISTICHE TECNICHE



Technical characteristics | Caracteristiques technique | Technische eigenschaften | Технические характеристики

Lastre / piastrelle di ceramica in gres porcellanato - Gruppo Bla UGL (UNI EN 14411_G) Porcelain stoneware slabs / tiles - Gruppe Bla UGL (UNI EN 14411_G) Dalles / carreaux en céramique en grès céram - Group Bla UGL (UNI EN 14411_G) Keramikplatten / keramikfliesen aus Feinsteinzeug - Groupe Bla UGL (UNI EN 14411_G) Керамические пластины / Керамическая плитка из керамогранита - Брунна Bla UGL (UNI EN 14411_G)		Metodo di prova Test method Méthode d'essai Prüfmethode Метод испытания	Requisiti prescritti Required value Valeur requise Vorgeschriebener Wert Требуемые значения	Risultato Results Résultat Ergebnis Результат	Valutazione Valuation Évaluation Bewertung Оценка	
				< 120 cm	≥ 120 cm	
	Lunghezza e larghezza Length and width Longueur et largeur Länge und Breite Длина и ширина	± 0,6% ± 2 mm	± 0,5 mm ± 0,6%	± 0,9 mm ± 0,6%	Conforme Compliant Conforme Konform Соответствует	
	Spessore Thickness Épaisseur Stärke Толщина	± 5% ± 0,5 mm	± 5% ± 0,5 mm	± 3% ± 0,5 mm	Conforme Compliant Conforme Konform Соответствует	
	Rettilineità degli spigoli Edge straightness Rectitude des arêtes Rechtlinigkeit der Kanten Прямолинейность кромок	± 0,5% ± 2 mm	± 0,5% ± 2 mm	± 0,6% ± 2 mm	Conforme Compliant Conforme Konform Соответствует	
	Ortogonalità Rectangularity Orthogonalité Rechtwinkligkeit Ортогональность	UNI EN ISO 10545-2	± 0,6% ± 2 mm	± 1 mm ± 0,5 %	± 2 mm ± 0,5 %	Conforme Compliant Conforme Konform Соответствует
	Planarità Planarity Planéité Rechtwinkligkeit Плоскостность		± 0,5% ± 2 mm	± 0,5 % ± 2 mm	± 0,5 % ± 2 mm	Conforme Compliant Conforme Konform Соответствует
	Qualità della superficie Surface quality Qualité de la surface Oberflächenqualität Качество поверхности		≥ 95%	Conforme Compliant Conforme Konform Соответствует	Conforme Compliant Conforme Konform Соответствует	
	Assorbimento d'acqua Water Absorption Absorption d'eau Wasseraufnahme Водопоглощение	UNI EN ISO 10545-3	≤ 0,5%	≤ 0,1%	Conforme Compliant Conforme Konform Соответствует	
	Resistenza alla flessione Bending strength Resistance a la flexion Biegezugfestigkeit Стойкость к изгибу	UNI EN ISO 10545-4	Modulo di rottura Modulus of rupture Module de rupture Bruchlast П едел п очности п и азыве ≥ 35 N/mm ²	6,5 mm ≥ 50 N/mm ² 10 mm ≥ 45 N/mm ²	Conforme Compliant Conforme Konform Соответствует	
	Sforzo di rottura Breaking strength Effort de rupture Bruchkraft Разрушающее усилие > 1300 N/mm ²		≥ 7,5 mm > 1300 N < 7,5 mm > 700 N		Conforme Compliant Conforme Konform Соответствует	
	Resistenza al gelo Frost resistance Résistance au gel Frostbeständigkeit Морозостойкости	UNI EN ISO 10545-12	Resistente Resistant Résistant Widerstandsfähig Стойкий	Ingelivo Frost proof Ingelif Frostsicher Морозостойкость	Conforme Compliant Conforme Konform Соответствует	
	Resistenza agli sbalzi termici Resistance to thermal shock Résistance aux écarts de température Temperaturwechselbeständigkeit Стойкость к тепловым перепадам	UNI EN ISO 10545-9	Resistente Resistant Résistant Widerstandsfähig Стойкий	Resistente Resistant Résistant Widerstandsfähig Стойкий	Conforme Compliant Conforme Konform Соответствует	
	Resistenza all'abrasione profonda Deep abrasion resistance Résistance à l'abrasion profonde Tiefenverschleißbeständigkeit Сопротивление глубокому истиранию	UNI EN ISO 10545-6	≤ 175 mm ³	6,5 mm ≤ 130 mm ³ 10 mm ≤ 145 mm ³	Conforme Compliant Conforme Konform Соответствует	
	Resistenza dei colori alla luce Colour resistance to light exposure Résistance des couleurs à la lumière Farbechtheit unter Lichteinfluss Светостойкость цветов	DIN 51094	Resistente Resistant Résistant Widerstandsfähig Стойкий	Resistente Resistant Résistant Widerstandsfähig Стойкий	Conforme Compliant Conforme Konform Соответствует	

Lastre / piastrelle di ceramica in gres porcellanato - Gruppo Bla UGL (UNI EN 14411_G) Porcelain stoneware slabs / tiles - Gruppe Bla UGL (UNI EN 14411_G) Dalles / carreaux en céramique en grès céram - Group Bla UGL (UNI EN 14411_G) Keramikplatten / keramikfliesen aus Feinsteinzeug - Groupe Bla UGL (UNI EN 14411_G) Керамические пластины / Керамическая плитка из керамогранита - Брунна Bla UGL (UNI EN 14411_G)		Metodo di prova Test method Méthode d'essai Prüfmethode Метод испытания	Requisiti prescritti Required value Valeur requise Vorgeschriebener Wert Требуемые значения	Risultato Results Résultat Ergebnis Результат	Valutazione Valuation Évaluation Bewertung Оценка
				< 120 cm	≥ 120 cm
	Resistenza allo scivolamento Skid resistance Résistance au glissement Rutschhemmung Сопротивление проскальзыванию	DIN 51130	Da R9 a R13 From R9 to R13 De R9 à R13 Von R9 bis R13 От R9 до R13	R 9 6,5 mm R 10 10 mm	Conforme Compliant Conforme Konform Соответствует
	Resistenza allo scivolamento_D-COF Skid resistance_D-COF Résistance au glissement_D-COF Rutschhemmung_D-COF Сопротивление проскальзыванию_DCOF	ANSI A 137.1:2012	> 0,42 wet	> 0,42 wet	Conforme Compliant Conforme Konform Соответствует
		BCRA	> 0,40 dry leather > 0,40 wet rubber	> 0,40 dry > 0,40 wet	Conforme Compliant Conforme Konform Соответствует
	Resistenza allo scivolamento_PENDULUM Skid resistance_PENDULUM Résistance au glissement_PENDULUM Rutschhemmung_PENDULUM Сопротивление проскальзыванию_PENDULUM	BS 7976-2	on request ≥ 36	dry rubber 4S: ≥ 36* wet rubber 4S: on request ≥ 36*	Conforme Compliant Conforme Konform Соответствует
		AS 4586	on request P3	P3: un request*	Conforme Compliant Conforme Konform Соответствует
		ENV 12633	on request Class 2	Class 2 on request*	Conforme Compliant Conforme Konform Соответствует
	Resistenza allo scivolamento Skid resistance Résistance au glissement Rutschhemmung Сопротивление проскальзыванию	DIN 51097	Da A a C From A to C De A à C Von A bis C От A до C	A	Conforme Compliant Conforme Konform Соответствует
	Resistenza all'attacco chimico Chemical resistance Resistance a l'attaque chimique Beständigkeit gegen chemikalien Химическая стойкость	UNI EN ISO 10545-13	Valori dichiarati Declared values Valeurs déclarées Erklärte Werte Заявленные значения	A	Conforme Compliant Conforme Konform Соответствует
	Detergenti ad uso domestico e additivi per uso piscina Household detergents and additives for swimming pools Détergents à usage domestique et additifs pour piscines Hausreinigungsmittel und Zusatzstoffe für Schwimmbäder Бытовые моющие средства и добавки для бассейнов		B minimo B minimum B minimum Mind. B Минимальный B		
	Resistenza all'attacco chimico Chemical resistance Resistance a l'attaque chimique Beständigkeit gegen chemikalien Химическая стойкость	UNI EN ISO 10545-13	Valori dichiarati Declared values Valeurs déclarées Erklärte Werte Заявленные значения	A; LA; HA	Conforme Compliant Conforme Konform Соответствует
	Acidi e basi ad alta e bassa concentrazione High- and low-concentration acids and bases Acides et bases à haute et basse concentration Säuren und Basen mit hoher und niedriger Konzentration Кислоты и щелочи высокой и низкой концентрации		B minimo B minimum B minimum Mind. B Минимальный B		
	Resistenza alle macchie Stain resistance Resistance aux taches Fleckenbeständigkeit Стойкость к образованию пятен	UNI EN ISO 10545-14	Valori dichiarati Declared values Valeurs déclarées Erklärte Werte Заявленные значения	Valori dichiarati Declared values Valeurs déclarées Erklärte Werte Заявленные значения	Conforme Compliant Conforme Konform Соответствует
	Resistenza al fuoco Fire reaction Résistance au feu Feuerfestigkeit Огнестойкость	EN 13501 (rev. 2005)	Resistente Resistant Résistant Widerstandsfähig Стойкий	Resistente Resistant Résistant Widerstandsfähig Стойкий	Conforme Compliant Conforme Konform Соответствует

* **Con trattamento su richiesta. Valore da verificare su ogni singolo lotto produttivo.** | With treatment available on request. Check rating for each production batch. | Avec traitement sur demande. Valeur à vérifier sur chaque lot de production. | Auf Anfrage mit Behandlung. Wert bei jeder einzelnen Charge des Produktes zu prüfen. | С обработкой по заказу. Значения подлежат проверке для каждой отдельной производственной партии.

Maggiori informazioni per consigli di posa e manutenzione del prodotto su: www.fondovalle.it
 For more information about laying and product maintenance, please visit: www.fondovalle.it | Pour de plus amples informations relatives aux conseils de pose et à l'entretien du produit, visitez le site : www.fondovalle.it | Weitere Produktinfos und Verlege- und Wartungsratschläge siehe: www.fondovalle.it | Более подробная информация и рекомендации по укладке изделия и уходу за ним на сайте: www.fondovalle.it



Ceramics of Italy

AD: Marketing Dept.

12/2020

© Ceramica Fondovalle S.p.A.

È vietata la riproduzione, totale e parziale del catalogo in tutte le sue forme.
Reproduction of this printed catalogue totally or partially, is forbidden.

Ceramica Fondovalle si riserva di apportare, qualora lo ritenesse opportuno, eventuali modifiche di natura tecnica o formale ai dati riportati in questo strumento. I colori sono puramente indicativi.
Ceramica Fondovalle reserves the right, when it deems necessary, to make technical and formal changes to the data included herein. The colours are purely illustrative.

FONDOVALLE

Ceramica Fondovalle S.p.A.

Via Rio Piodo, 12
41053 Torre Maina, (MO) Italy
T. +39 0536 934211
F. +39 0536 934250
www.fondovalle.it