

ENRICH YOUR HOME WITH  
A PANASONIC KITCHEN



## Panasonic Homes & Living

3rd Floor, B Wing, I-Think Techno Campus, Pokharan Road No.2,  
Thane (West), Thane 400 607. Maharashtra. | Contact No.: +91 82910 09651

For more information, please visit <https://panasonic.net/ecosolutions/housing/in/kitchen/>

Bangalore • Mumbai • Ahmedabad • Hyderabad

MOULDED WC | DOORS | WOODEN FLOORING | VANITY

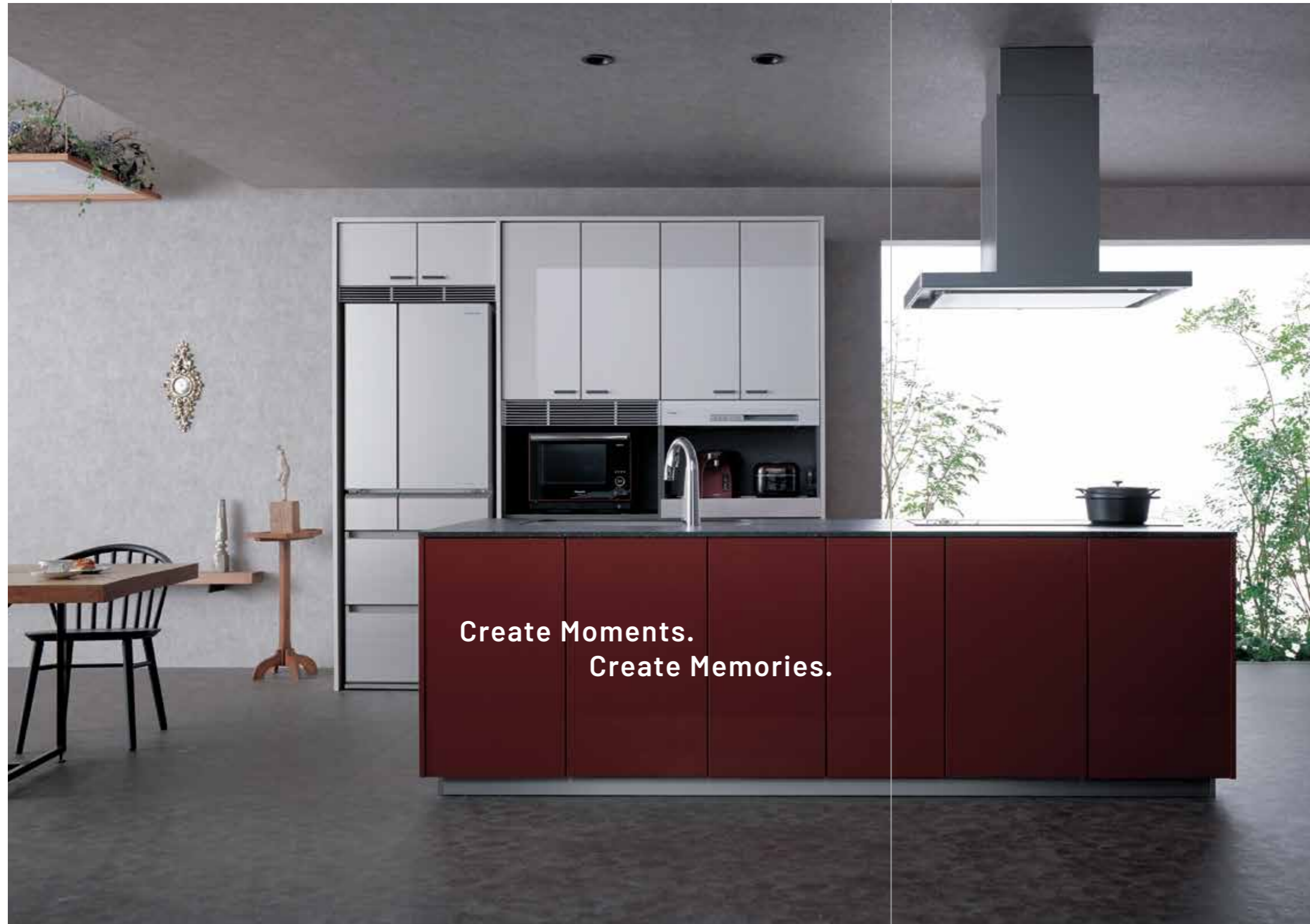


**INSTANT SERVICE**  
in house team



# L-CLASS

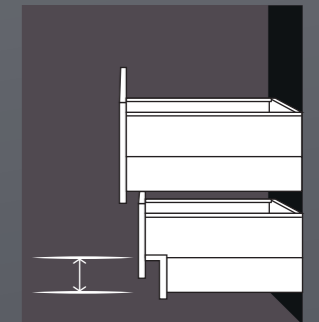
KITCHEN



Create Moments.  
Create Memories.

6,000,000  
Satisfied Consumers Globally

Floor  
stocker  
with  
**EXTRA  
SPACE**



Kitchen with  
Highest Certified Boards



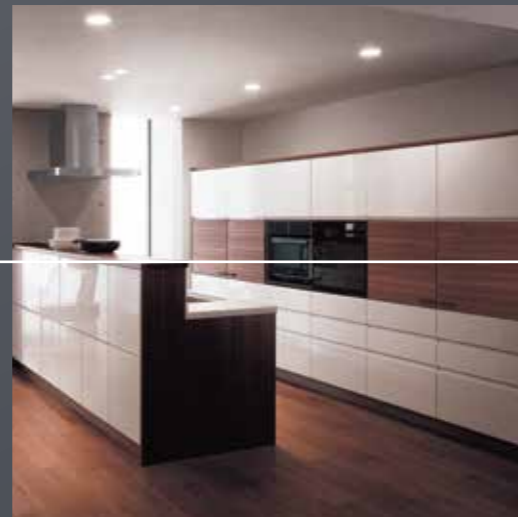
At Panasonic, we understand how the kitchen is the most important part of the house. Therefore, we go the extra mile to ensure that you have the most delightful kitchen. From free design to a professional setup, you can now source every kitchen appliance from our product range. Let us design and build your dream kitchen!



## IMPRESSION

Let every inch spell class

Attractive, enticing, alluring. Now, let your kitchens make a statement! Panasonic kitchens look inviting because special care goes into making every aspect appearance simply marvelous. Our intention is to make every moment you spend in the kitchen a delight.



## STORAGE

Smart units for efficient storage

Designed for space and efficiency, our storage units are attractive and useful in equal parts. What makes them unique is their smart design, making it easy to stack your wares and remove them as well. They enhance the convenience aspect of your kitchen quite significantly.



## DURABILITY

A lifetime of comfort and class

In every Panasonic Kitchen, we make sure that the make is truly par excellence in every single way. No compromise will happen from the materials used to the finish of the eventual product, to provide you with the very best.

## IMPRESSION

Doors / Handles / Counter



Doors in a wide variety of finishes and materials, including beautiful paint and natural wood, have a profound look that combines with highly decorative countertops to create a higher-grade dining space in rich color variations.

Selectable doors

**100** Patterns

Available in a wide variety of finishes and materials, including eye-catching colors and stately-looking natural wood.

Selectable handles

**10** Types

Handles are the most often touched part of any kitchen and an important design component essential to how the kitchen ultimately looks.







Freely mix and match your "Favorite" kitchen from a great selection of units, materials and finishes.

You'd like to have a kitchen where you can enjoy cooking every day. A kitchen just for your home, that's why there is a story to tell. After listening to such desires and contemplating color tones, Panasonic chose 16 series of cabinet doors in 100 color patterns.

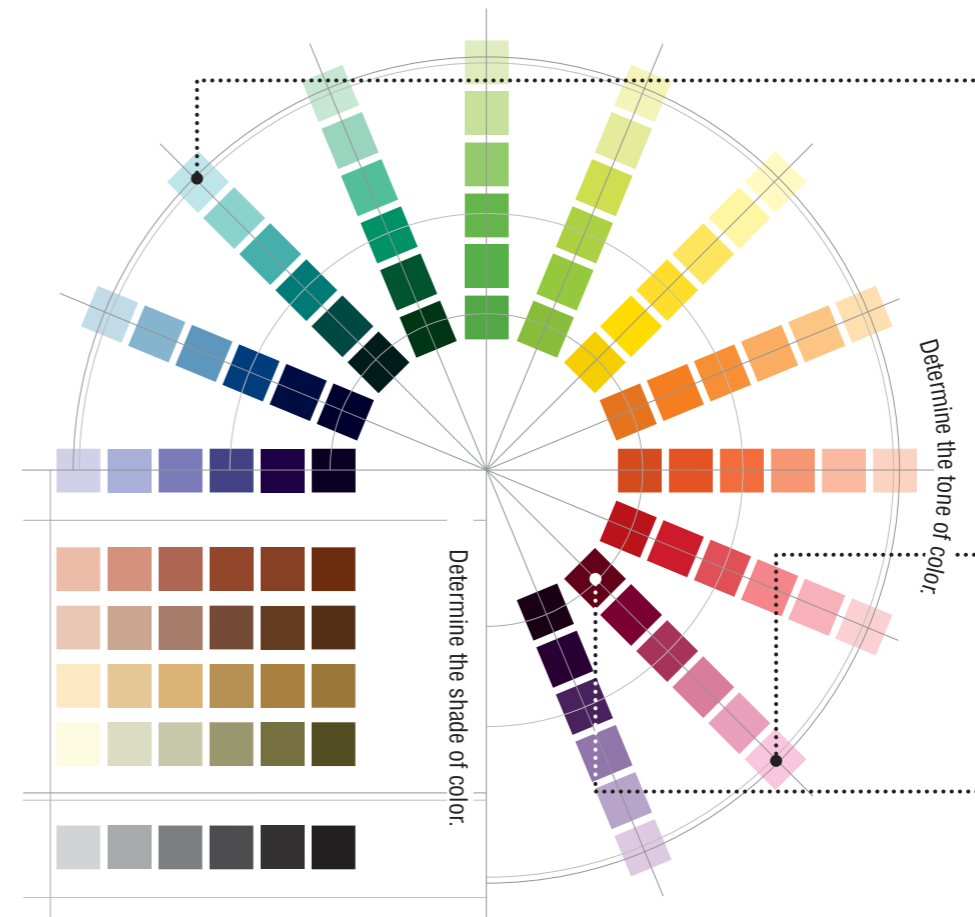


## Colours



We can produce a door in an original color matched to your favorite interior.

For example, by matching the color of the door to your furniture or coordinating it with the color of interior fabric, we can produce a one-of-a-kind door in an original color.



## Countertops

Personalize your kitchen in every minute detail, including the fit of the counter and colors.

These artificial marble countertops are made by compounding organic glass materials with natural mica to exhibit a deep and clear look. The uneven surface finish that reproduces the expression of genuine stone offers resistance to scratches and also facilitates cleaning as the material incorporates water- and oil-repelling components.



"Glario" artificial marble countertops made of organic glass materials



## STORAGE

### Smart Storage / Cupboard



Assuring smart storage of food, dishes, and small appliances in positions convenient for use

Smart and effective use of space achieves three-dimensional storage of the right item in the right place. You can choose the color of the small appliance storage unit. The unit is also available in a stately grain tone that adds a decorative accent to the monochrome door. It harmonizes with furniture and looks sophisticated.

- Small appliance storage
- Dish storage with "Rotary mesh baskets"
- Active wall storage unit
- Tall pantry with different size variations
- High counter plan for small appliance
- Wall-mounting type



Smart storage of small appliances



Smart storage of food



Smart storage of dishes



Smart storage of dust box





A cupboard can store food, dishes, and small appliances in places convenient to use and in a smart fashion.



A wide variety of plans, colors, and counters are ready for your selection.  
This wall-mounting storage unit with long hinged doors makes your room more refined and spacious.



Tall plan / Counter plan / Tall counter plan



Tall plan for small appliance storage

## Floor Unit

WonderFULL Cabinet - Easy to store, Easy to take out. Advanced, large-capacity storage

Even if you store items up at the back of the drawer, this full open type of drawer easily pulls out so you can get at them. The WonderFULL Cabinet provides easy and convenient storage of the items without wasting space.

- Soft closing mechanism with full-open slide rails
- Smoky grey side panels
- Adjustment panels / dividing bars



Underhob units  
Small drawer (Push open type)



Underhob unit for  
grill-less stove



Smart undersink unit with  
two sliding drawers



Smart corner



## Wall Unit

### Pursuing ease of use "within arm's reach"

For a wall unit on the kitchen side, you can choose a handle-less wall unit or the unit with a handle. The handle-less wall unit gives a kitchen a sophisticated look with its even sleek design.



Flap-up door storage unit



SoftDown wall unit  
(with earthquake resistant lock)



Combination pallet



Wall unit with a hinged door lighting space



Variable heights

## DURABILITY

## Counter

### Slim Counter & Semi-floating Plan

#### Selectable counters

**23** Patterns

The work top greatly affects how the kitchen looks and changes the atmosphere depending on how it is coordinated with the door material.

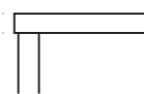


#### Features of Glario

- Heat resistance upto 300°
- Water and oil repelling components

#### Providing a stylish and attractive kitchen

Making the counter look stylish with a thickness as slim as **17 mm** gives the kitchen tasteful and inviting ambiance.



The perfect fit of the end panel and bottom gives kitchen the appearance of beautiful furniture.



# Sink

A stainless steel sink offers outstanding cleanliness

- Seamless joints
- Zero seepage



The seamless surface keeps the sink stain-resistant and easy to clean.



## Options for sinks

Smart cooking nets



Wide drainage basket



# Options

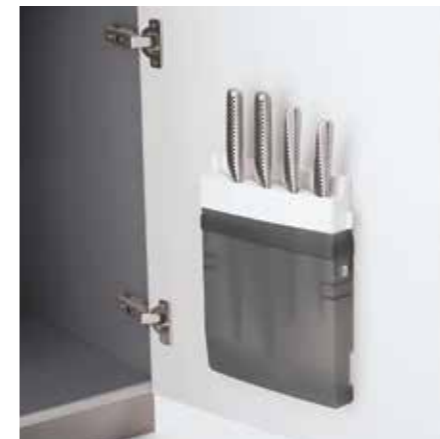
## Options for drawers



Multipurpose box / Bottle tray / Cutting board stand

- In built organisers for smart storage
- Base of drawers with 35 surgical grade Stainless Steel

## Options for under sink unit



Kitchen knife holder



Piping protection cover



Dust box wagon

## Options for open units

## Towel hanger



## Rice chest



Rice chest for hinged door



# Plan List



L type Wall-mounting + Island Kitchen Plan



I type Wall-mounting + Small Appliance, Open Counter Kitchen Plan



L type (I type layout) + Island Kitchen Plan



L type Low Step Open + High Counter Kitchen Plan



Open Kitchen Plan (Peninsula)



Smart Step Open Kitchen Plan (Peninsula)



I type High Step Open Kitchen Plan (Peninsula)



I type Wall-mounting + Hatch type, Small Appliance Storage, High Counter Kitchen Plan



I type Wall-mounting Kitchen Plan



I type Wall-mounting + Hatch type, Small Appliance Storage, High Counter Kitchen Plan



II type Wall-mounting + Semi-floating type Island Kitchen Plan



U-type Flat, Semi-floating type Open Kitchen Plan



I type Island Kitchen Plan



II type Sink Open Kitchen Plan



## Lighting

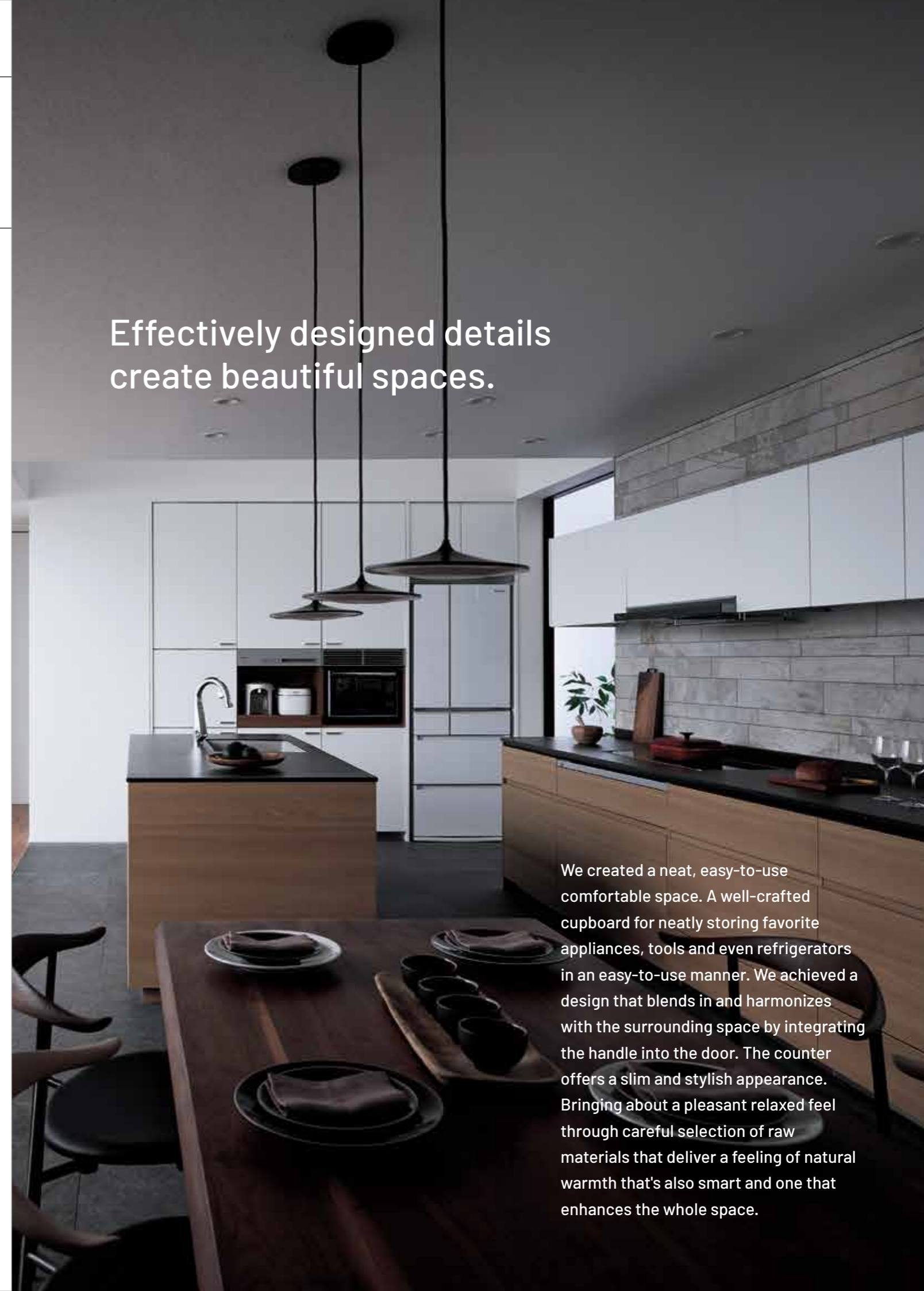
By providing lighting, we can "personalize" your kitchen just for you.



Under Cabinet Lights | Cabinet Downlighters | Internal Cabinet Lighting | Decorative Shelf Lights



Effectively designed details create beautiful spaces.



We created a neat, easy-to-use comfortable space. A well-crafted cupboard for neatly storing favorite appliances, tools and even refrigerators in an easy-to-use manner. We achieved a design that blends in and harmonizes with the surrounding space by integrating the handle into the door. The counter offers a slim and stylish appearance. Bringing about a pleasant relaxed feel through careful selection of raw materials that deliver a feeling of natural warmth that's also smart and one that enhances the whole space.